

We specialize in moments of discovery.

ExploreBoards place your business in front of someone who doesn't know to search for you... **yet.**

We create the spark, firing up the engine of imagination for an experience that just might make the highlight reel of your best vacation memories.

Working closely with our extensive and well-respected host partner relationships through CTM Media Group, ExploreBoards are installed at high-traffic visitor locations in a variety of styles and finishes and serviced by CTM professionals.

VisitorFun ExploreBoard campaigns are sold by destination through DOOH (digital out-of-home) networks targeting an audience of in-market visitors where they stay and play.

Our local expertise with location selection ensures a targeted tourist audience for your business.

exploreboard

EQUIPMENT OPTIONS:

- **22" TABLET**
- Android app
- Touchscreen (Touchless option N/A)
- Desktop stands
- Freestanding floor stands*

- **32" SCREEN & MEDIA PLAYER**
- **42" SCREEN & MEDIA PLAYER**

- Touchless option available
- Touchscreen option available
- Freestanding floor stands*

*Silver, black, or white

FEATURES:

TOUCHLESS EXPLOREBOARDS

- **Screen take-over campaigns**
- **Business profile campaigns** (Basic)

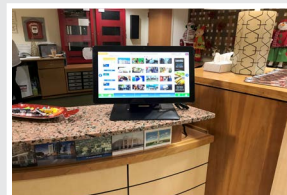
EXPLOREBOARD TOUCHSCREENS:

- **Screen take-over campaigns**
- **Banner ad campaigns**
- **Local airport flight departure times**
- **Business profile campaigns:**
- Maps & directions
- Send-to-me option for SMS or email
- Special offers
- Booking information messages
- Translations (for main copy)
- Event calendar

TOUCHLESS EXPLOREBOARDS



EXPLOREBOARD TOUCHSCREENS



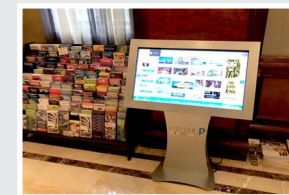
22" TABLET ON DESKTOP STAND

- Android app
- Touchscreen only



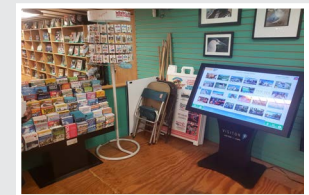
22" TABLET ON FLOOR STAND

- Android app
- Touchscreen only



32" EXPLOREBOARD WITH MEDIA PLAYER ON FLOOR STAND

- Touchscreen option
- Touchless option



42" EXPLOREBOARD WITH MEDIA PLAYER ON FLOOR STAND

- Touchscreen option
- Touchless option