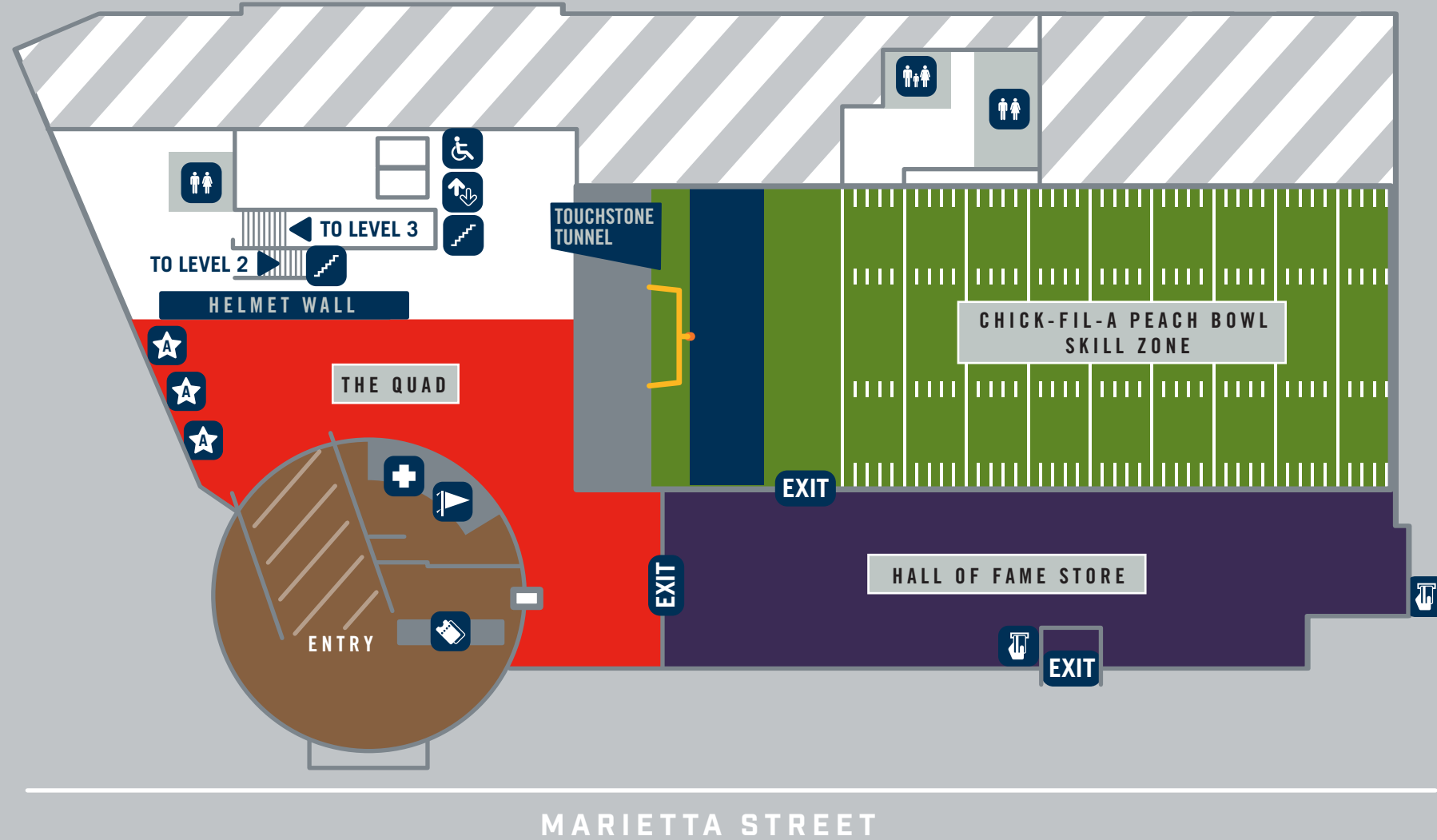
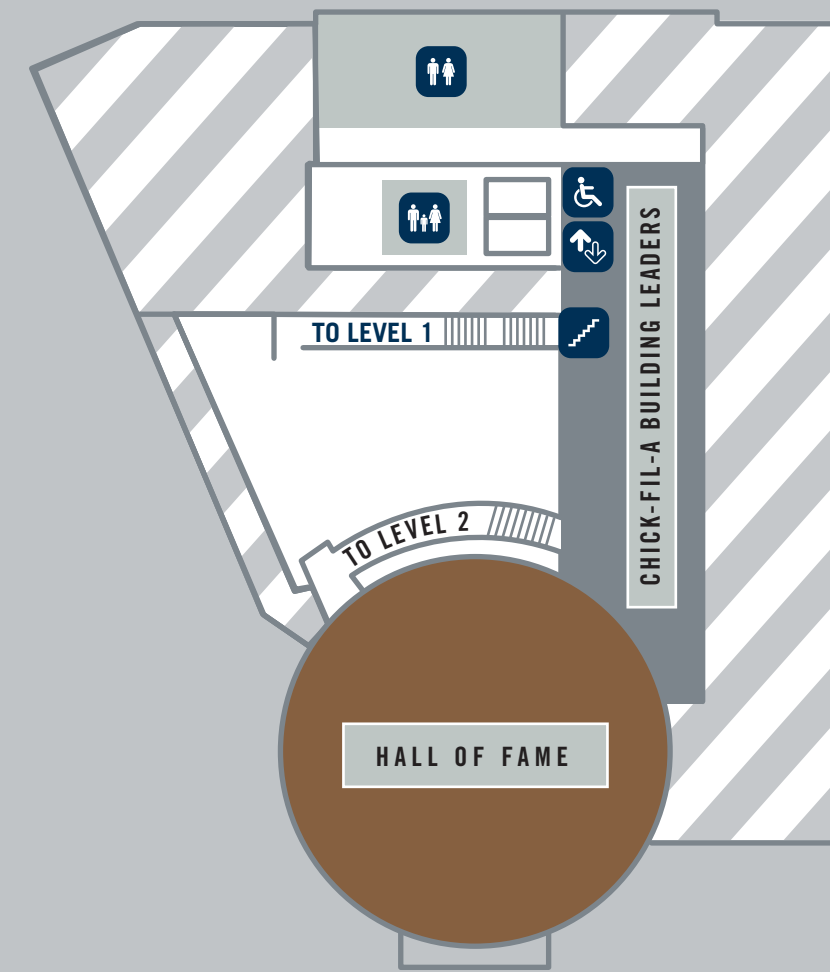


LEVEL 1



LEVEL 3



CHICK-FIL-A WHY WE LOVE COLLEGE FOOTBALL

A 52-foot-long interactive multi-touch media wall that combines the heritage of the game with the technology of today. View displays of iconic college football trophies and many individual awards given out each year to players and coaches.



COCA-COLA FANS' GAME DAY

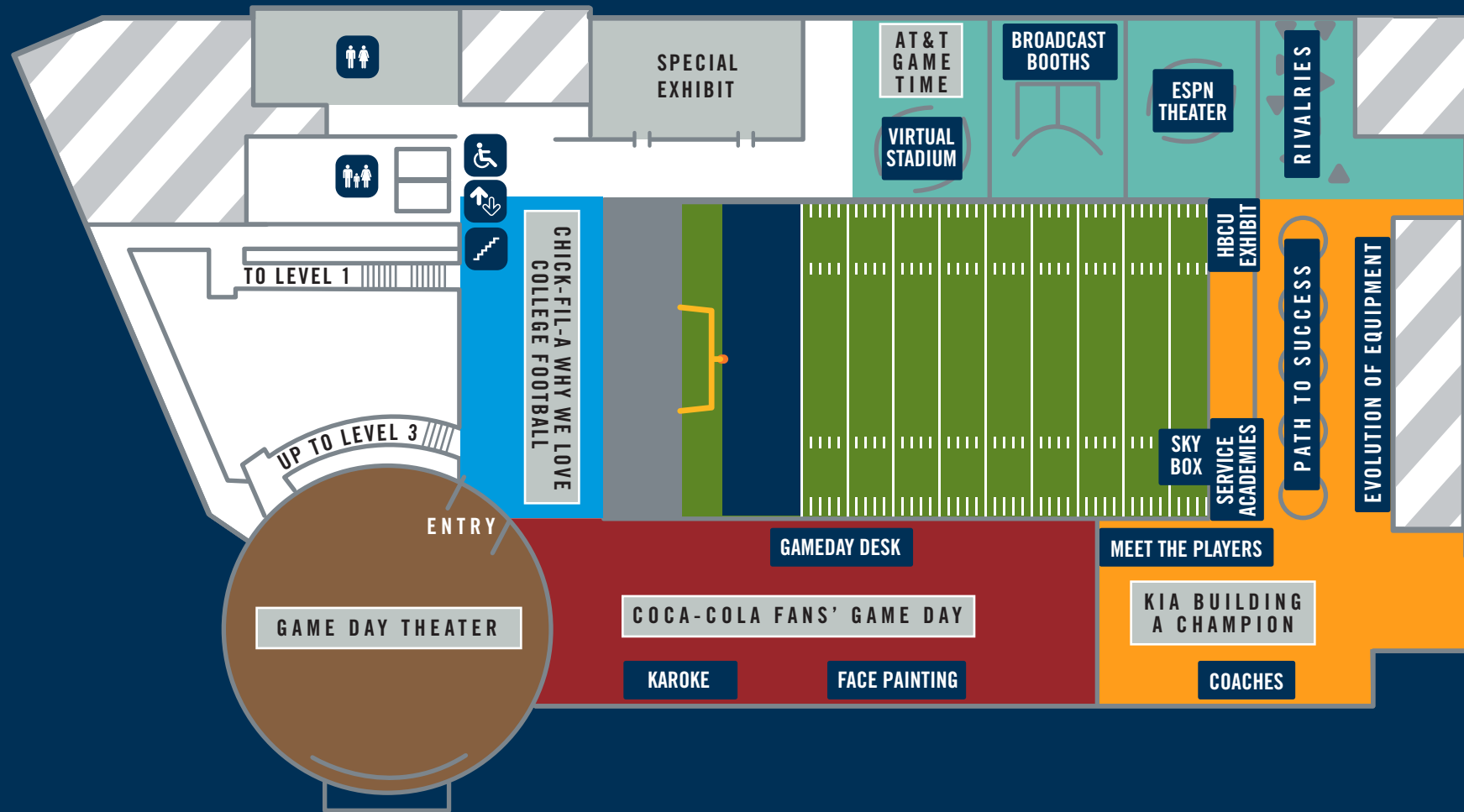
A tribute to fans, mascots, cheerleaders, bands, traditions and tailgating is brought to life. Fans' Game Day features the ESPN College GameDay desk.

KIA BUILDING A CHAMPION

An inspirational look at what it takes to be a college football student-athlete and coach. Other exhibits pay homage to Historically Black Colleges & Universities and Service Academies, trace the evolution of equipment, and more.



LEVEL 2

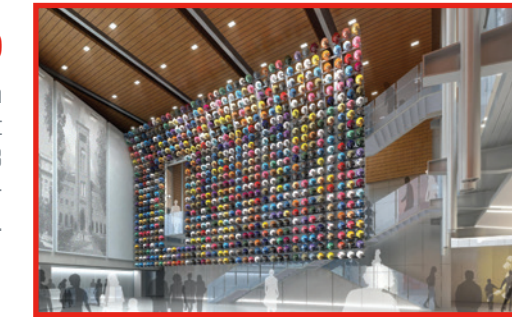


TAKE A LOOK

LEVEL 1

THE QUAD

Fans enter through the Entry Tunnel which leads to The Quad. Anchored by the Helmet Wall, this wall features helmets from all 768 college football teams. Register your All-Access Pass here.



THE PLAYING FIELD

A 45-yard indoor football field where fans can sharpen their skills at the Chick-fil-A Peach Bowl Skill Zone through a variety of physical activities.

LEVEL 2

GAME DAY THEATER

Fans will be treated to an ultra-high-definition 4K feature film "The Game of Your Life." The film immerses fans in a behind-the-scenes look at game day through the perspectives of former players and coaches.



LEVEL 3

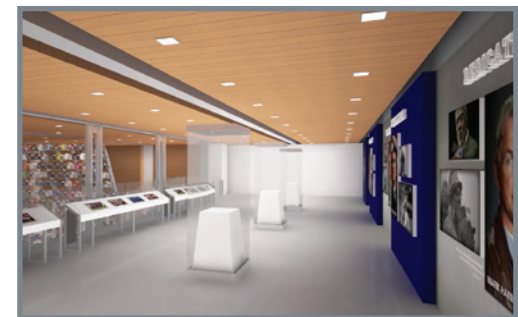
CHICK-FIL-A BUILDING LEADERS

An impressive tribute to those that have achieved accolades on the field and have gone on to make a difference off of it, this gallery spotlights the mission and work of the National Football Foundation.



HALL OF FAME

The Hall of Fame features the stories and accomplishments of the players and coaches who captured our hearts and cemented their legacies into the game.



KEY



SEASON TICKETS

Become a part of the Hall of Fame family today! Season Ticket Holders can take advantage of free daily admission, special invitations to chosen events, and 15% off at the Hall of Fame store. See a Fan Ambassador for more information.

HALL OF FAME STORE

Take the excitement of the College Football Hall of Fame and Chick-fil-A Fan Experience home with you. Visit our retail store and get your official Hall gear.

EVENT SPACE RENTALS

Host your next special event at the College Football Hall of Fame and Chick-fil-A Fan Experience attraction. The Hall features approximately 60,000 square feet of event and exhibit space. Event spaces include the Quad, The Playing Field, Game Day Theater and the Hall of Fame Gallery.

Interested in bringing your special event to the College Football Hall of Fame? Please email events@cfbhall.com.

Personalize your experience today with an All-Access Pass to the College Football Hall of Fame and Chick-fil-A Fan Experience!

- Each fan will receive an All-Access Pass
- Register at the Quad or any interactive station. Provide your name, favorite college football team, and email address.
- As you walk through the Hall, get ready for a personalized experience as various exhibits will recognize you and your chosen school.
- You can also access and download your videos and pictures from your visit to the Hall via our website. Go to www.cfbhall.com and collect your memories!

Thank you to our Founding Partners and Official Sponsors

FOUNDING PARTNERS



OFFICIAL SPONSORS



WELCOME!

The College Football Hall of Fame and Chick-fil-A Fan Experience is new to Atlanta but brings with it a timeless tradition of pageantry and excitement that pays tribute to the greatest fan bases, players and coaches of the game. With 768 college football programs in the U.S., the Hall features numerous exhibits that cater to all ages. Representing FBS, FCS and Division III schools along with NAIA football programs, the Hall brings an immersive and entertaining experience that honors the game, its participants, and fans in a big way!



HISTORY OF THE COLLEGE FOOTBALL HALL OF FAME

The National Football Foundation (NFF) launched the College Football Hall of Fame in 1951 to stand as one of the nation's premier sports shrines, immortalizing the game's greatest players and coaches as positive role models for future generations. In 2009, Atlanta Hall Management, Inc., partnered with the NFF to construct and operate the new attraction to house the Hall of Fame and to provide a platform for community outreach, entertainment, education and character development initiatives, as well as serve as one of Atlanta's premier special event spaces.



HOURS OF OPERATION

Sun. – Fri.: 10 a.m. – 5 p.m.
Sat.: 9 a.m. – 6 p.m.
Closed: Thanksgiving Day and Christmas Day
*Opening and closing times are subject to change

CONTACT INFORMATION

250 Marietta Street N.W., Atlanta, Georgia 30313
info@cfbhall.com
404-880-4800
www.cfbhall.com