

FIFTH FLOOR

Performance Hall

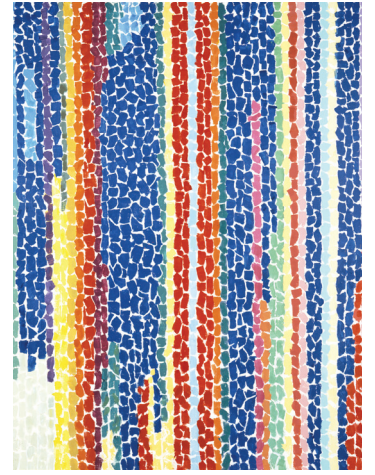
FOURTH FLOOR

Betty Boyd Dettre Library & Research Center
(Mon.–Fri., 10 a.m.–noon & 1–5 p.m.)



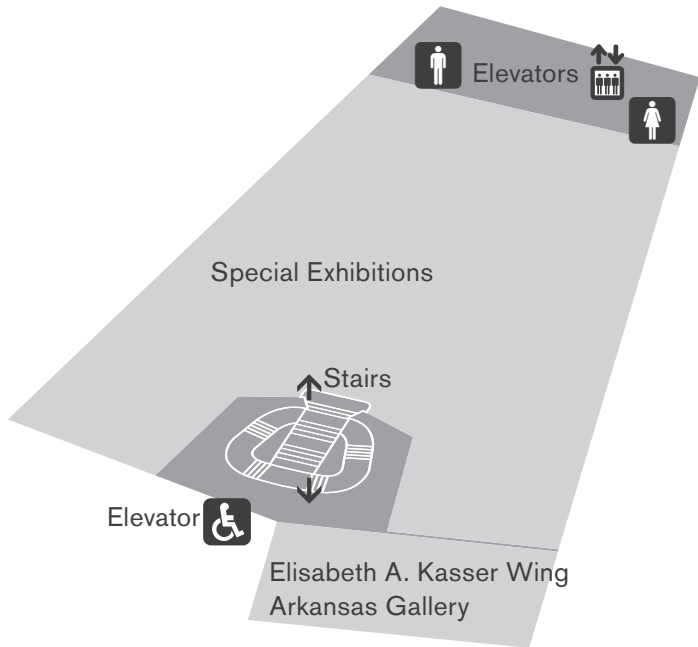
THIRD FLOOR

COLLECTION HIGHLIGHTS FROM THE 19TH CENTURY TO TODAY



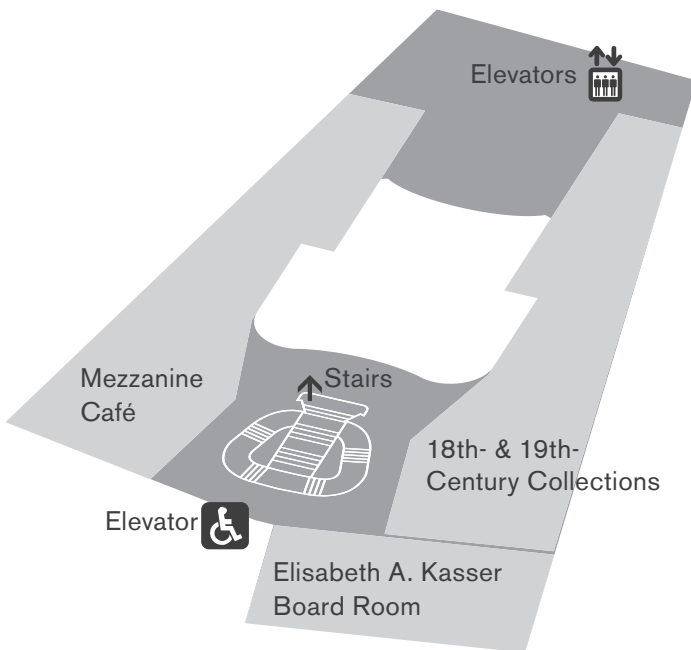
SECOND FLOOR

SPECIAL EXHIBITION GALLERIES



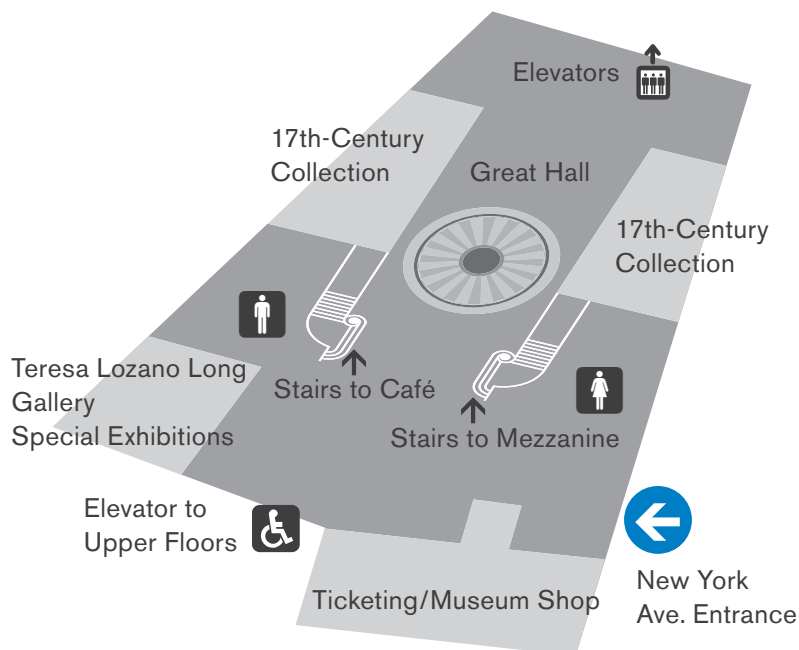
MEZZANINE

MEZZANINE CAFÉ, MON.–FRI., 11 A.M.–2 P.M.;
COLLECTION HIGHLIGHTS FROM THE 18TH & 19TH CENTURIES



GROUND FLOOR

COLLECTION HIGHLIGHTS FROM THE 17TH CENTURY
SPECIAL EXHIBITION GALLERY
TICKETING AND MUSEUM SHOP



NEW YORK AVENUE SCULPTURE PROJECT

Located in the median of New York Avenue between 12th and 13th Streets, it is the only public art space featuring changing installations of contemporary works by women artists.