

ACTIVITIES



THE PLANETARIUM

The digital technology of this sky theater can take you through the solar system and beyond, or offer you a live tour of the night sky.

TIPS FOR THE PLANETARIUM

- Planetarium tickets are for printed times only.
- Complimentary passes must be redeemed at the Front Desk and cannot be used at the Planetarium door.
- Please line up at the Planetarium entrance 10 minutes prior to the start of the show – doors lock at the show's start.
- No late entry allowed; no refunds or exchanges.



VULCAN MATERIALS GEM PANNING

Relive the old days of mining! Pan for gems and fill your bags with treasures to take home!



THE FOSSIL DIG

Become a paleontologist! Dig through sand and uncover ancient creatures, then pick out your favorite fossil for your own collection!

PLANETARIUM

Planetarium shows begin every 45 minutes. Planetarium tickets are \$3.50 (\$2 for members) for the first show. A second show during a single visit to the Museum is \$2. Shows are subject to seating and availability. Check with the Front Desk for today's schedule.

MEMBERSHIP

Join the Tellus family by becoming a member! Museum members enjoy benefits including: free admission, early registration on select events, 10% discount in the Store, 10% discount in the Café, and a subscription to our newsletter, *The Telluscope*.

JOIN TODAY TO CREDIT TODAY'S ADMISSION TOWARD YOUR MEMBERSHIP!

See any Tellus Associate for details.

BECOME A VOLUNTEER

Tellus is a great place to volunteer. Volunteers receive special benefits including free admission to Tellus, Booth Western Art Museum, and Bartow History Museum.

MISSION

Because science matters, we engage, educate, and inspire visitors to make scientific connections through dynamic exhibits and enriching experiences.

Follow us on Facebook and Twitter!



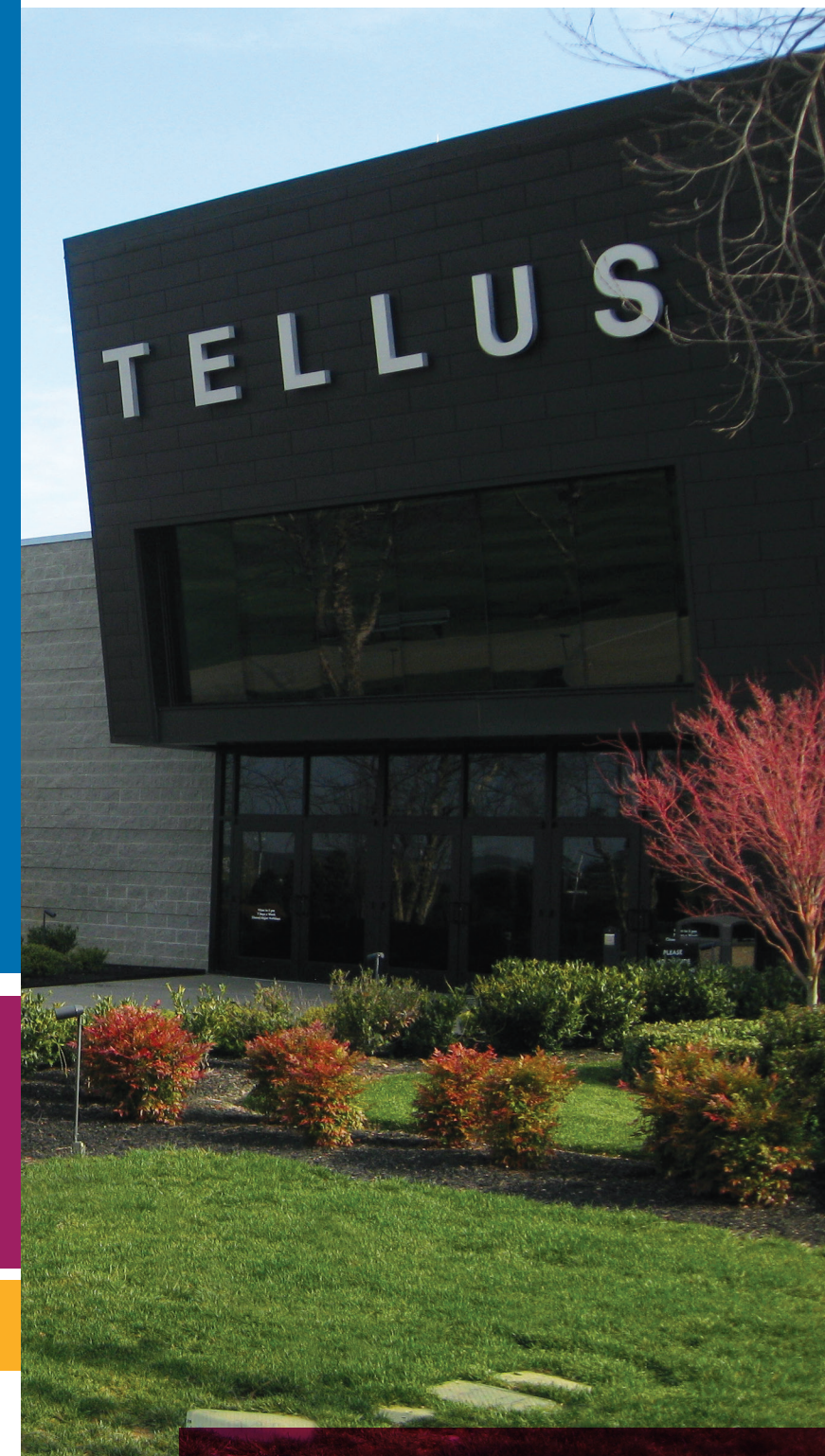
INTERSTATE 75, EXIT 293

100 TELLUS DRIVE | CARTERSVILLE, GA | 770-606-5700

OPEN 7 DAYS A WEEK, 10 AM-5 PM (EXCEPT MAJOR HOLIDAYS)

tellusmuseum.org

TELLUS SCIENCE MUSEUM



CAMPUS MAP



tellusmuseum.org

GALLERIES

WEINMAN MINERAL GALLERY

Walk through the layers of the Earth, see the continents in motion, and enjoy one of the finest mineral exhibits in the United States. The McNitt Family Mining Exhibition features exhibits on mining, mineral uses, and Georgia's mining heritage. Our giant periodic table shows a collection of elements and their everyday uses. The Mayo Mineral Exhibition includes more than 50 cases with a variety of gems, gold, and Georgia's most unique minerals.

FOSSIL GALLERY

Get ready for dinosaurs, large marine reptiles, and giant mammals in a timeline that spans billions of years! Most exhibits relate to the paleontology of the Southeastern United States, with real bone specimens exhibited with most skeletons. The gallery also features touch pieces, interactives, and cases displaying the museum's extensive fossil collection including fossils from Georgia.

SCIENCE IN MOTION

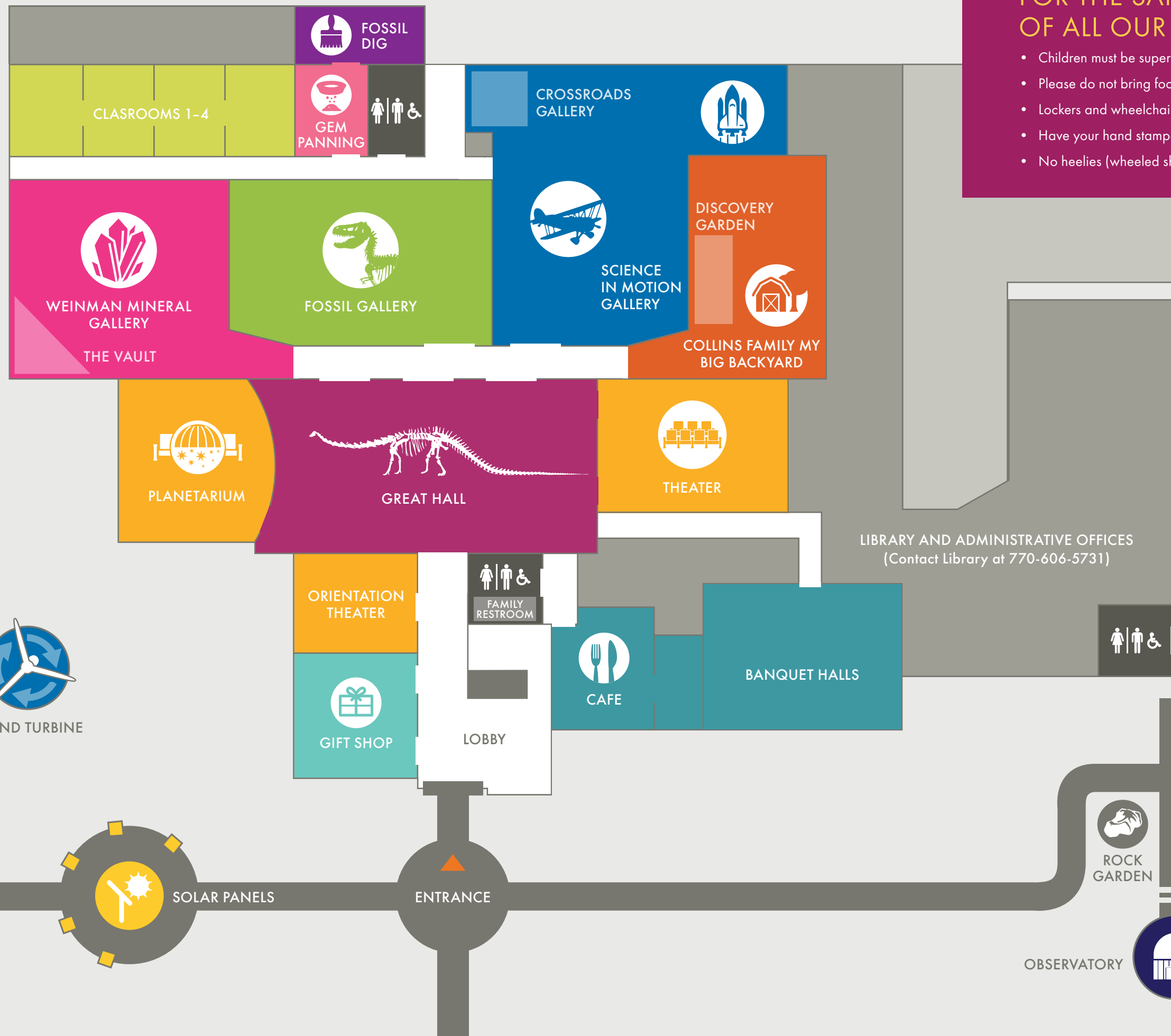
This is where it all began in transportation – the first use of engines to move vehicles! Exhibits range from vintage cars powered by gas, steam, and electricity, to the EV1 (the first contemporary electric car). See an authentic replica of the Wright Brothers' Flyer, the first true airplane. An early helicopter, a jet cockpit, and rockets all symbolize the everyday application of science in transportation technology.

COLLINS FAMILY MY BIG BACKYARD

The world of science is every child's playground in this hands-on-gallery! Experiment with light in the Greenhouse. Discover the nature of sound in the Shed. Electricity and magnetism will come alive (safely) in the Workshop. The Giant Tree will invite you to experience weather! The Backyard will inspire everyone, from the youngest scientist to the more seasoned experimenters.



CAMPUS MAP



FOR THE SAFETY AND CONVENIENCE OF ALL OUR VISITORS

- Children must be supervised at all times.
- Please do not bring food or drink into the Museum.
- Lockers and wheelchairs are available for your convenience – please see the Front Desk.
- Have your hand stamped at the Front Desk to exit and re-enter the Museum.
- No heelies (wheeled shoes) allowed in the Museum.

PHOTOGRAPHY POLICY
 Photography for personal, non-commercial use is allowed throughout the museum, except in the Planetarium. No flash photography on artwork. No tripods are allowed in the Museum.

