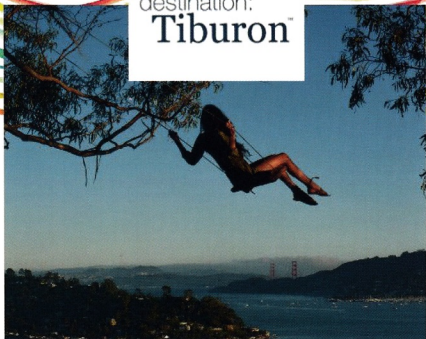
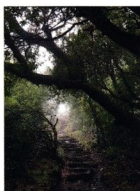


destination:
Tiburon[™]



INSPIRATION COMES NATURALLY



CHECK US OUT HERE!



| [destinationtiburon](#)



| [@destinationtiburon](#)



| [destinationtiburon.org](#)



WHAT TO DO IN TIBURON

STOPOVER

A quick visit calls for a stroll down Main Street and Ark Row, then a bite at the classic Sam's Anchor Care — be sure to take in the terrific views from the deck.

PICNIC

A quick visit calls for a stroll down Main Street and Ark Row, then a bite at the classic Sam's Anchor Care — be sure to take in the terrific views from the deck.

DAY HOP

A quick visit calls for a stroll down Main Street and Ark Row, then a bite at the classic Sam's Anchor Care — be sure to take in the terrific views from the deck.

KIDS RULE

A quick visit calls for a stroll down Main Street and Ark Row, then a bite at the classic Sam's Anchor Care — be sure to take in the terrific views from the deck.

OVERNIGHT

A quick visit calls for a stroll down Main Street and Ark Row, then a bite at the classic Sam's Anchor Care — be sure to take in the terrific views from the deck.

HOME BASE

A quick visit calls for a stroll down Main Street and Ark Row, then a bite at the classic Sam's Anchor Care — be sure to take in the terrific views from the deck.

THE TIBURON PENINSULA IS ACCESSIBLE BY FERRY, BICYCLE, AND BY CAR VIA THE ICONIC HIGHWAY 101 TO TIBURON BOULEVARD.

MAP