



The Best of Sault Ste. Marie - Planes, Trains and Automobiles



DAY 1

Art Gallery of Algoma

Approximately 24 exhibitions are mounted each year featuring local, national and international artists. The AGA boasts an ever growing permanent collection of 5000 works of art and an art-related resource centre. Learn more about the unique history in Algoma as you explore the Group of Seven Gallery of original prints.



Ermatinger • Clergue National Historic Site and Heritage Discovery Centre

The Ermatinger • Clergue National Historic Site welcomes visitors the two oldest stone buildings northwest of Toronto. These buildings have witnessed the transformation of a small Ojibwa encampment into a Northern Ontario hub. The newest addition to the property is the Heritage Discovery Centre, which will introduce visitors to the National Historic Site. Step back in time with this unique experience!



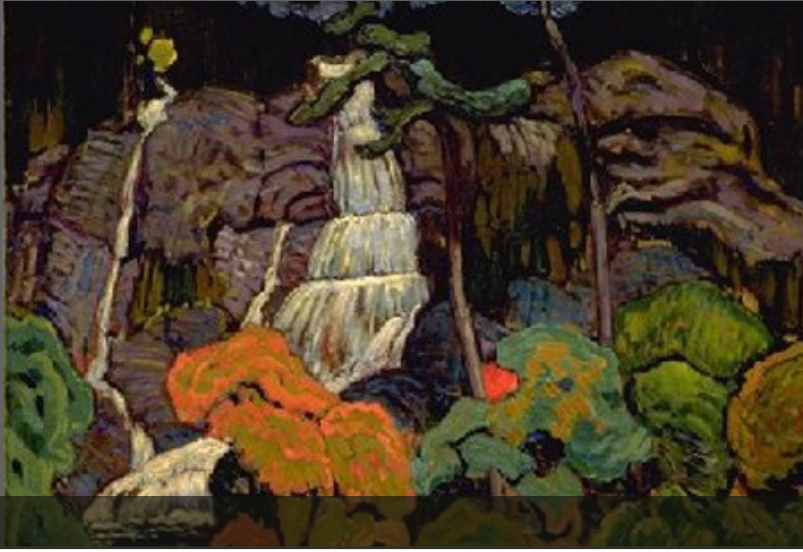
Canadian Bushplane Heritage Centre

Dedicated to preserving the history of bush flying and forest protection in Ontario and Canada, the Bushplane Museum was founded in 1987 by a group of local volunteers. The CBHC is a completely interactive and hands-on museum, containing over thirty aircraft exhibits. Take part in a personal screening of the new documentary “Painted Land: In Search of the Group of Seven”, after hearing the history of beer making in Sault Ste. Marie at the Northern Superior Brewing Co and beer museum.



Parks Canada - Sault Ste. Marie Canal

On the edge of the rapids at Sault Ste. Marie, lie the historic buildings, antique machinery and picturesque grounds of the Sault Ste. Marie Canal. Designed and built by Canadians, the canal incorporated several engineering innovations. It was the world’s longest lock and the first to operate with electrical power.



Day 2

Agawa Canyon Tour Train

All aboard one of the most popular train excursions in Northern Ontario! This one day wilderness adventure will take you 114 miles north of Sault Ste. Marie, over towering trestles, alongside pristine northern lakes and rivers, and through amazing granite rock formations that inspired Canada's famous Group of Seven artists. The large picture windows of your comfortable coach provide a great view as you learn through a GPS triggered commentary, the vast history of the Algoma Region.



During a stop in Agawa Canyon Park, experience a scenic walk along the Agawa River with your local artist guide and explore one of the four waterfalls found in the park, including Bridal Veil Falls painted by the Group of Seven. Or climb to the top of a stunning lookout platform 250 feet above the tracks.



Day 3

Group of Seven - Lake Superior Coastal Drive

A spectacular drive right along the largest freshwater Lake in the world, the Lake Superior coastal drive is named as one of the Top Ten Drives in North America. These landscapes represent an early informative stage in the Group of Seven's encounter with the North. The members of the Group of Seven first painted the region in 1918, at times traveling on the train, at others along the coast of Superior.



While making your way to the Agawa Bay Pictographs in Lake Superior Provincial Park, be sure to visit some of the original locations painted by the Group of Seven; showcasing interpretive panels dedicated to their experiences in the Algoma Region. Panels are found at the following locations along the Trans-Canada Highway: Chippewa Falls, Pancake Bay Provincial Park and the Lake Superior Interpretive Centre.