

the warhol:

**You haven't been
to Pittsburgh**

**until you've been
to The Warhol.**

The Andy Warhol Museum

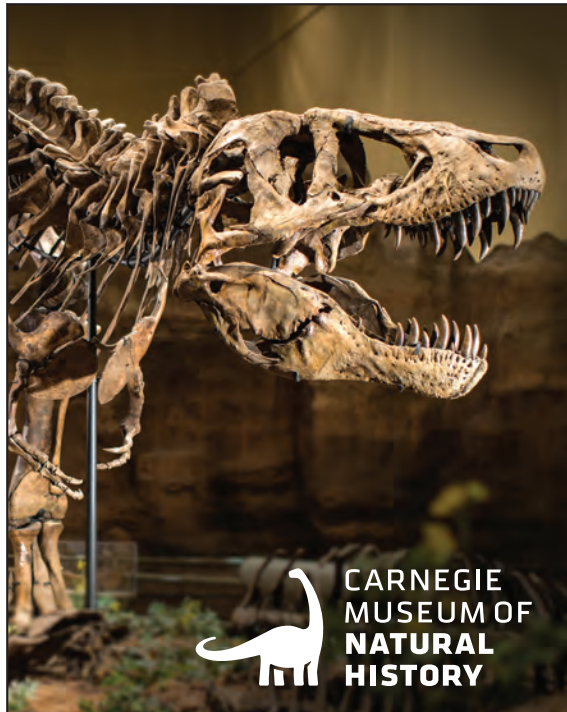
One of the four Carnegie Museums of Pittsburgh

117 Sandusky St., Pittsburgh, PA 15212 412.237.8300 warhol.org



The Andy Warhol Museum receives state arts funding support through a grant from the Pennsylvania Council on the Arts, a state agency funded by the Commonwealth of Pennsylvania; the National Endowment for the Arts, a federal agency and The Heinz Endowments. Further support is provided by the Allegheny Regional Asset District.

Andy Warhol, *Silver Clouds*, 1966, ©The Andy Warhol Foundation for the Visual Arts, Inc., photo ©Abby Warhola



**CARNEGIE
MUSEUM OF
NATURAL
HISTORY**

DISCOVER SOMETHING NEW

TWO WORLD-CLASS MUSEUMS. ONE PRICE.

From iconic works of art to the world's first *T. rex*, from hands-on programs to late-night events, there's something new every time you visit. Explore two museums for the price of one.

CARNEGIE MNH.ORG
CMOA.ORG
412.622.3131

HALF-PRICE ADMISSION
WEEKDAYS AFTER 3 P.M.

FREE DAILY TOURS

TWO OF THE FOUR
CARNEGIE MUSEUMS OF PITTSBURGH

**CARNEGIE
MUSEUM OF
ART**



Visual Arts & Museums



THEFRICKPITTSBURGH.ORG
412-371-0600

7227 REYNOLDS STREET
PITTSBURGH, PA 15208

THE
FRICK
PITTSBURGH
MUSEUMS AND GARDENS

VisitPITTSBURGH.com



Locals *Love*

Set your sight. Make your move. Repeat. Climbing provides life lessons (and killer back muscles).

 ascendpgh

Sports & Recreation

**SIX SUPER BOWL RINGS.
FIVE STANLEY CUP
CHAMPIONSHIPS. FIVE
WORLD SERIES PENNANTS.**

It's hard to find fans anywhere who are more passionate than Pittsburghers are about their "black and gold," the colors of all three title-winning professional teams in the City of Champions. We're just as boisterous about our college teams, too.

Heinz Field



PNC Park

Pittsburgh Steelers fans are known as “Steelers Nation” for taking their unwavering support of this special team wherever they go. Steelers football dominates all year round. Die-hard fans start the season early by visiting training camp at St. Vincent College in Latrobe.

Baseball is the all-American pastime and watching the **Pittsburgh Pirates** play at the best MLB ballpark in America adds to the enjoyment. The classic-style PNC Park offers unmatched vistas of Downtown and sometimes the excitement of a home run smacked into the Allegheny River.



PPG Paints Arena

When the **Pittsburgh Penguins** bring home the big silver trophy, Pittsburghers across the city jump at the chance for a photo with the Cup. The Pens’ media team is known for engaging fans with digital and social innovation.

Sometimes the best seat at a sporting event is during a college ball game. The **University of Pittsburgh Panthers** are national champions, too – nine wins in football and two in basketball. Pitt sponsors 19 Division I varsity sports and is adding varsity women’s lacrosse.

Duquesne University’s 16 men’s and women’s varsity teams also compete at the NCAA Division I level. In addition to football and basketball, the Dukes’ athletics program includes cross-country, soccer, tennis and track and field. Women also play lacrosse and volleyball and have swimming and rowing teams.

The athletics department at **Robert Morris University (RMU)** places an emphasis on academics, and RMU twice has claimed



Highmark Stadium

the highest overall institutional GPA among student-athletes competing in the NCAA Division I conference. The Colonials’ Island Sports Center promotes family fun.

Love soccer? The **Pittsburgh Riverhounds** pro soccer team plays at Highmark Stadium at Station Square. The **Pittsburgh Passion** franchise for women’s football holds open tryouts all season, no experience necessary. The **Steel City Roller Derby** is a women’s flat track league committed to serious competition – a skater-owned and operated organization that develops its athletes.

Great moments of Pittsburgh sports history are enshrined at the **Western Pennsylvania Sports Museum** in the Senator John Heinz History Center. Pay homage to The Great One at the **Roberto Clemente Museum** at Engine House 25 in Lawrenceville. Also, find home plate for **Forbes Field**, former home of the Pirates, in the University of Pittsburgh’s Hillman Library.

“
It’s hard to find
fans anywhere
who are more
passionate than
Pittsburghers.
”





LET US HELP YOU GET THE
Creative Juices
 FLOWING

ocreations[®] LLC

THE HOMETOWN DESIGN AGENCY OF THE 2013-2020
 VISITPITTSBURGH OFFICIAL VISITORS GUIDE

412-532-8282 • OCREATIONS.COM



A university with heart.
 In a city of opportunity.

Nationally ranked, top-tier university

9 schools with 160 degree programs

Among the Princeton Review's "Best 385 Colleges"

Ranked #51 "Best Value School" by *U.S. News & World Report*



A Catholic University in
 the Spiritan Tradition

duq.edu

“Highest Member Satisfaction in Pennsylvania” –J.D. Power



When it comes to the quality of care you and your family deserve, second best just won't do. And when you're a member of UPMC Health Plan, it doesn't have to.

UPMC Health Plan provides access to the world-class doctors and hospitals of UPMC as well as thousands of community doctors and hospitals. Global medical services from Assist America, coverage for children until age 26 no matter where they live, and outstanding member service all mean you get the best health care plan.

Here's the plan for getting the best care. And the best customer service. Learn more at UPMCHealthPlan.com.

HERE'S THE
PLAN

UPMC HEALTH PLAN

UPMC Health Plan received the highest score in Pennsylvania in the J.D. Power 2016-2018 U.S. Member Health Plan Satisfaction Studies of customers' satisfaction with their commercial health plan. Visit jdpower.com. UPMC is one of only 20 hospitals nationwide to be listed on the U.S. News & World Report Best Hospitals Honor Roll, with national rankings in 14 specialties (August 8, 2017).



Outdoor Adventure

Spending time outdoors has proven benefits, and opportunities abound here to connect with nature. Grab a friend to boost your fun and fitness by visiting the Pittsburgh region's trails, parks, rivers or lakes.

Allegheny River

With activities that span every interest and experience level, **Venture Outdoors** does the planning so you can focus on enjoying the adventure.

The 24-mile **Three Rivers Heritage Trail** has segments on both banks of Pittsburgh's three rivers with access to city neighborhoods, business districts and local attractions.

From Pittsburgh to Washington, D.C., the **Great Allegheny Passage** soars over valleys and snakes around mountains — a perfect path for hikers and cyclists.

Healthy Ride, a public bike-sharing system with more than 100 stations, lets you explore Pittsburgh via its riverfront trails and bike lanes in many neighborhoods.

Explore North Park from **Go Ape's** treetop obstacle course, or embark on a high-flying, adrenaline-rushing zip line adventure at **Pittsburgh Zoo & PPG Aquarium**.

Many of *Golf Digest's* best-ranked public courses are in Western Pennsylvania, including **Olde Stonewall**, **Quicksilver Golf Club** and **Mystic Rock at Nemacolin Woodlands Resort**.

Take to the water to see Pittsburgh from another vantage point. Rent a pontoon from **Boat Pittsburgh** or a paddleboard from **SurfSUP Adventures**. Relax with gear from **Kayak Pittsburgh**, which also offers instruction.

Laurel Highlands River Tours & Outdoor Center has something for everyone: rafting, recreational or whitewater kayaking, rock climbing, mountain biking or zip lining.

Novices and experts alike can **fish Pittsburgh's rivers**. Nearby state parks with well-stocked lakes and streams also lure anglers.

Whether you're a spectator or driver, there is non-stop fun with karting, racing or autocross at **Pittsburgh International Race Complex**.

Winter sports include ice skating, cross-country skiing and snowshoeing.

“ Grab a friend to boost your fun and fitness. ”





City Parks

The City of Pittsburgh offers a wide variety of parks and playgrounds throughout its 90 neighborhoods.

Schenley Park

Five regional parks stretching across the city provide a picturesque escape from the hustle and bustle. Pittsburgh maintains one of the best urban forests in the nation with a tree canopy of nearly 42%.

FRICK PARK, Pittsburgh's largest at 644 acres, is in the city's East End. With its wooded trail systems, Frick Park provides a quiet escape to those who visit. Frick Environmental Center, ballfields, red clay tennis courts, playgrounds and even an off-leash dog area are just a few of the attractions that make Frick Park so popular.

HIGHLAND PARK, with its beautiful Victorian-style entry garden sitting in front of the Historic Reservoir #1, offers beautiful vistas in every direction. Visitors can enjoy all the amenities Highland Park has to offer — 3/4-mile walking loop around the reservoir, Bud Harris cycling track and the Pittsburgh Zoo & PPG Aquarium.

RIVERVIEW PARK is an urban park set among several of Pittsburgh's North Side neighborhoods, serving as home to the Allegheny Observatory. Riverview Park's many trails make this a popular destination for hikers and joggers.

EMERALD VIEW PARK'S 257 acres overlooking Pittsburgh provide majestic views at every turn. Travel like you live here by riding the Monongahela or Duquesne Incline to visit this perfectly perched park.

SCHENLEY PARK'S 456 acres of greenspace and attractions are listed on the National Register of Historic Places and provide a civic oasis for all who visit. Located between Squirrel Hill and Oakland, Schenley Park is a daily destination for university students, businesspeople and outdoor enthusiasts. Schenley Park has much to offer including Phipps Conservatory and Botanical Gardens, the Bob O'Connor Golf Course, the Schenley Oval Sportsplex and the Schenley Park Westinghouse Memorial.

While visiting Pittsburgh you can also enjoy one of the five community parks — Allegheny Commons Park, Mellon Park, Mellon Square Park, McKinley Park and Sheraden Park. Additionally, the neighborhoods are surrounded by 171 parks, parklets and playgrounds. Be sure to experience the outdoors in Pittsburgh.

LEARN MORE AT: PITTSBURGHPA.GOV



Allegheeny County Parks

Allegheeny County's nine parks offer a variety of exciting seasonal and year-round activities just waiting to be explored.

North Park

The nine county parks welcome more than 6 million visitors every year, with each park displaying its unique niche. Whether it's skiing the slopes, hiking and biking on the trails, fishing, golfing or attending an outdoor concert, the more than 12,000 acres have something for visitors of all ages.

ALLEGHENY COUNTY PARKS DEPARTMENT

412-350-2455 • 412-350-7275

542 Forbes Ave. • Rm 211 • Pittsburgh, PA 15219

HOURS: Call or visit website. Allegheeny County's nine parks span more than 12,000 acres and offer an array of seasonal and year-round sporting, leisure and entertainment opportunities, including golf, swimming, skiing, ice skating and more.

BOYCE PARK

724-327-0338 • 675 Old Frankstown Rd. • Pittsburgh, PA 15239

HOURS: Park opens daily, 8 a.m.-Sunset. Call or visit website for venue hours.

Encompasses 1,096 acres in Monroeville and Plum. Features the only downhill skiing and snow tubing in Allegheeny County. Amenities include ballfields, wave pool, trails, skate park, archery range, shelters and nature center.

DEER LAKES PARK

724-265-3520 • 1090 Baileys Run Rd. • Tarentum, PA 15084

HOURS: Park opens daily, 8 a.m.-Sunset. Call or visit website for venue hours.

Encompasses 1,180 acres in Frazer and West Deer Townships. Features include fishing lakes, observatory, spray park, shelters, disc golf course, playgrounds, multipurpose field and walking, hiking and jogging trails.

HARRISON HILLS PARK

724-295-3570 • 5200 Freeport Rd. • Natrona Heights, PA 15065

HOURS: Park opens daily, 8 a.m.-Sunset. Call or visit website for venue hours.

Encompasses 500 acres in Harrison Township. Features include environmental learning center, shelters, scenic overlook, playgrounds, soccer fields, ponds, birding area, walking, hiking and bridle trails.

HARTWOOD ACRES PARK

412-767-9200 • 200 Hartwood Acres • Pittsburgh, PA 15238

HOURS: Park opens daily, 8 a.m.-Sunset. Call or visit website for venue hours.

Encompasses 629 acres in Hampton and Indiana Townships. Features free concerts Sunday evenings, June-August. Amenities include mansion tours, teas, off-leash dog area, and cross-country skiing, walking, hiking and bridle trails.

NORTH PARK

724-935-1766 • 303 Pearce Mill Rd. • Allison Park, PA 15101

HOURS: Park opens daily, Dawn-Midnight. Call or visit website for venue hours.

Encompasses 3,075 acres in Hampton, McCandless and Pine. Features 65-acre lake with fishing and kayaking. Amenities include golf course, pool, ice rink, ballfields, nature center, shelters, off-leash dog areas and trails.

ROUND HILL PARK

412-384-4701 • 651 Round Hill Rd. • Elizabeth, PA 15037

HOURS: Park opens daily, 8 a.m.-Sunset. Call or visit website for venue hours.

Encompasses 1,101 acres in Elizabeth Township. Features exhibition farm with animals that is open every day of the year. Amenities include soccer fields, shelters, spray park, walking and bridle trails.

SETTLERS CABIN PARK

412-787-2750 • 1225 Greer Rd. • Oakdale, PA 15071

HOURS: Park opens daily, 8 a.m.-Sunset. Call or visit website for venue hours.

Encompasses 1,610 acres in Collier, North Fayette and Robinson Townships. Features include historic log cabin, wave pool, dive pool, shelters, tennis courts, playgrounds, walking and hiking trails.

SOUTH PARK

412-835-4810 • 100 Buffalo Dr. • South Park, PA 15129

HOURS: Park opens daily, Dawn-Midnight. Call or visit website for venue hours.

Encompasses 2,013 acres in Bethel Park and South Park. Features free concerts Friday evenings, June-August, golf courses, ballfields, wave pool, shelters, skate park, trails, nature center and ice rink.

WHITE OAK PARK

412-678-3774 • 3 Muse Lane • White Oak, PA 15131

HOURS: Park opens daily, 8 a.m.-Sunset. Call or visit website for venue hours.

Encompasses 810 acres in White Oak. Features include multi-purpose athletic field, shelters, wedding garden, playgrounds, off-leash dog area, bocce courts, volleyball courts, horseshoe pits, walking and hiking trails.

For admission and additional information, please call the listed phone number or visit ALLEGHENYCOUNTY.US/PARKS



9
Parks

12,000 Acres



500+ Events



VISIT ALLEGHENY COUNTY PARKS TODAY!

Boyce Park • Deer Lakes Park • Harrison Hills Park • Hartwood Acres Park
North Park • Round Hill Park • Settlers Cabin Park • South Park • White Oak Park



alleghenyparks.com



What is the GREAT ALLEGHENY PASSAGE?

From rails to glorious trails, the nearly level Great Allegheny Passage (GAP) traverses 150 miles from Pittsburgh through Ohiopyle State Park and the beautiful Laurel Highlands to Cumberland, Maryland. Built on the abandoned rail lines of the Western Maryland Railway and the Pittsburgh and Lake Erie Railroad, this world-class trail was deemed by *National Geographic* as one of the “Top 10 Fall Trips in the World.” Continue the journey along the C&O Canal Towpath to Washington, D.C. for a 333-mile bike trip of a lifetime!

Explore the trail on your own or with a group. Golden Triangle Bike Rental is great for all things GAP. Services range from fully-equipped bike rental packages with shuttle service to trip planning and tours.

Amtrak offers walk-on bicycle service for all stops between Pittsburgh and Washington, D.C., aboard the Capitol Limited train.

MILEAGE CHART

	Pittsburgh*	Honestead	West Newton	Connellsville*	Ohiopyle	Confluence	Rockwood	Meyersdale	Frostburg	Cumberland*	Hancock	Williamsport	Shepherdstown	Harpers Ferry*	Washington, DC*
9															
36	26														
61	52	25													
78	69	43	17												
88	78	52	27	10											
106	96	70	45	28	18										
118	108	82	57	40	30	12									
134	125	98	73	56	46	28	16								
148	140	114	89	71	62	44	32	16							
210	200	174	149	132	122	104	92	76	60						
234	225	199	173	156	147	129	117	100	85	25					
261	252	226	200	183	173	155	144	127	112	51	27				
273	264	238	212	195	186	168	156	139	124	63	39	12			
333	324	298	272	255	246	227	216	200	185	124	100	73	61		

*AMTRAK's Capitol Limited stations with walk-on bicycle service.



HIT THE TRAIL

► CUMBERLAND, MD – MILE 0

Rest up at the junction of the Great Allegheny Passage and the C&O Canal Towpath. You'll find numerous lodging options, including nationally branded hotels, B&Bs and campsites. There are plenty of restaurants, stores and bike shops to stock up before pedaling on.

► FROSTBURG, MD – MILE 15

Home to comfortable hotels and inns, with tent sites, restaurants, stores and laundromats. The trail runs alongside a railroad track on which the Western Maryland Scenic Railroad operates an old steam-powered locomotive en route to Cumberland.

► MEYERSDALE, PA – MILE 32

Home to the Pennsylvania Maple Festival every spring, and with easy access to the spectacular Salisbury and Keystone Viaducts, this lovely town boasts several B&B's, including the charming Levi Deal Mansion.

► ROCKWOOD, PA – MILE 43

A quaint town with a handful of B&Bs, a few restaurants, a market and pub. Check out the Rockwood Mill Shoppes & Opera House.

► CONFLUENCE, PA – MILE 60

Being situated near the Youghiogheny Dam makes for a terrific stopover. You'll find several B&Bs, cafes, pubs and a full-service bike shop. Make a reservation because this is a popular destination.

► OHIOPILE, PA – MILE 71

Pennsylvania's mecca for whitewater, this place becomes packed on weekends with kayakers, rafters and cyclists enjoying the Youghiogheny River. Choose from B&Bs, a small motel or campground, with a handful of dining spots.

► CONNELLSVILLE, PA – MILE 88

This lovely town sits where General Braddock crossed the Youghiogheny River en route to Fort Duquesne, an event reenacted every June. Public art adorns the downtown streets and an archway over the GAP next to a hiker-biker campground. Several B&Bs, a hotel, restaurants and a grocery store make this a perfect stop.

► WEST NEWTON, PA – MILE 113

The old train station was recreated as the West Newton Visitor's Center. The Trailside Pub and Restaurant overlooks the GAP. Stay overnight at one of the comfortable B&Bs or at nearby hiker-biker campground at Cedar Creek Park. Try the delicious Gingerbread Bakery or Bloom Brew Brewery.

► HOMESTEAD, PA – MILE 140

The Waterfront is an open-air shopping center situated on the Monongahela River on land once occupied by one of the largest steel mills in the country. Ride through the nationally-registered historic district to visit the restored Bost Building, an original Carnegie Library, or any one of several craft breweries or restaurants.

► PITTSBURGH, PA – MILE 150

YOU MADE IT! You know you're in the big city when you arrive at the city's South Side with its hotels, restaurants and shops. Cross over the historic Hot Metal Bridge and enjoy a smooth ride into Downtown and Point State Park.

#GAPTRAIL SPECIFICATIONS

LENGTH: 150 miles

SURFACE: Crushed limestone and asphalt

GRADE: Nearly level

14 Major Bridges **9** Visitor Centers

4 Tunnels **10** Trail Towns

WANT MORE INFO? Visit: GAPtrail.org



Find scenic trail towns about every 10 miles that provide travelers with all of the basic necessities. The towns listed above should be on your radar when planning to stay overnight.

INSIDER INFO

Want to know where to park, find shuttle services, locate lodging, or access maps? Pick up a copy of TrailGuide or visit GAPtrail.org to plan your trek.





IT'S A BEAUTIFUL DAY IN OUR NEIGHBORHOOD



Visit the Neighborhood of Make-Believe and experience the original television set, puppets, and cherished artifacts from Fred Rogers' iconic show, now on display at the Heinz History Center. King Friday XIII's castle, X the Owl's tree, and Mr. McFeely's tricycle will let you make believe you're a kid again. Won't you please, won't you please, please won't you be our neighbor?



1212 SMALLMAN STREET | PITTSBURGH, PA 15222
HEINZHISTORYCENTER.ORG

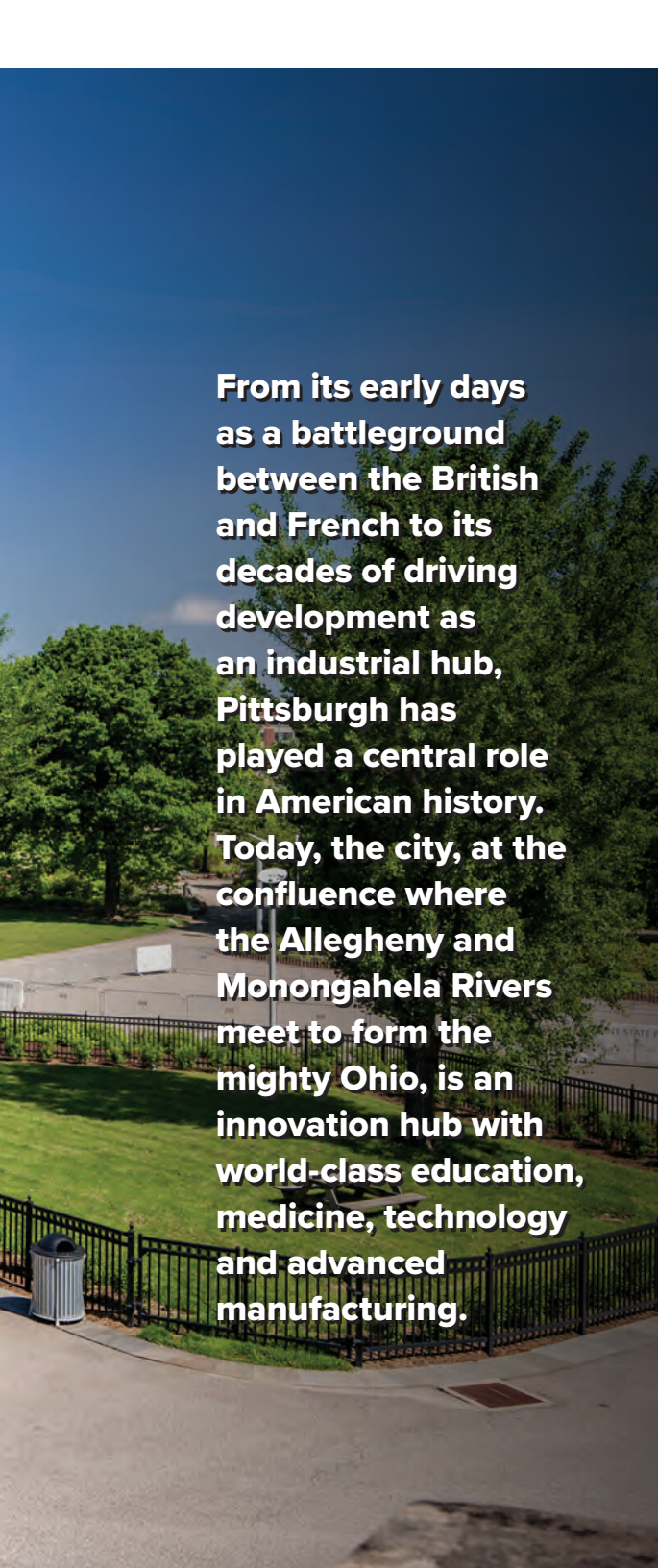


History & Landmarks

Pittsburgh has played a central role in American history.



Fort Pitt Block House



From its early days as a battleground between the British and French to its decades of driving development as an industrial hub, Pittsburgh has played a central role in American history. Today, the city, at the confluence where the Allegheny and Monongahela Rivers meet to form the mighty Ohio, is an innovation hub with world-class education, medicine, technology and advanced manufacturing.

Learn more about life in Western Pennsylvania and its place in American history through exhibitions at the **Senator John Heinz History Center**, a Smithsonian affiliate.

Fort Pitt Museum is located in Pittsburgh's oldest building, the **Fort Pitt Block House** (established in 1764) in Point State Park. Its exhibits detail the French & Indian War and colonial uprising.

Art and artifacts are on display at **Braddock's Battlefield History Center**. That history comes alive at **Bushy Run Battlefield** and **Fort Ligonier** through reenactments.

Go way back in time at **Meadowcroft Rockshelter and Historic Village**, where an archaeological dig uncovered amazing artifacts from prehistoric life.

Hartwood Acres is a picturesque 629-acre Allegheny County park with a magnificent 16th-century style Tudor mansion. Reservations are recommended for the daily mansion tours.

The lovingly restored **Woodville Plantation**, circa 1780, provides a link to 18th-century life. Its Market Faire and Whiskey Rebellion Day are among many events geared for history enthusiasts.

At the **Rachel Carson Homestead**, explore the life and legacy of the author and conservationist who laid the groundwork for clean air and water legislation and pesticide safety warnings.

Historic Harmony has a big history for a little town, with an Indian settlement, the Harmonists from Germany and the Mennonites. Its museum includes eight properties.

The **Carnegie Museum of Natural History** inspires visitors of all ages to become passionate about science, nature and world cultures. It's also home to a wondrous dinosaur repository.

More than a museum, **Soldiers & Sailors Memorial Hall & Museum** is a memorial and tribute to our armed forces with one-of-a-kind artifacts.

The story of 40 heroes who personified hope, courage and unity on 9/11 is preserved at the **Flight 93 Memorial** in a Shanksville field. Visitors can pay respects at Memorial Groves.

Westmoreland Heritage is a partnership of organizations and businesses committed to showcasing the county's remarkable culture and history.

EVENT SHOWCASE History & Landmarks

- ▶ **THROUGH FALL**
Pittsburgh, Virginia
Fort Pitt Museum
heinzhistorycenter.org/fort-pitt
- ▶ **MAY 25**
Memorial Day Celebration
Soldiers & Sailors Memorial Hall & Museum
soldiersandsailorshall.org
- ▶ **JUNE 20**
23rd Annual Atlatl Competition
Meadowcroft Rockshelter and Historic Village
heinzhistorycenter.org/meadowcroft
- ▶ **DEC. 6**
Open House
Nationality Rooms
University of Pittsburgh
nationalityrooms.pitt.edu

**There's more to
explore with
Rivers of Steel tours.**



Visit the Carrie Blast Furnaces!

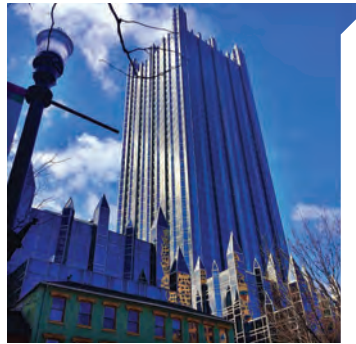
R riversofsteel.com
412.464.4020



Amazing Architecture

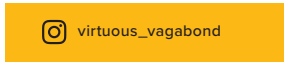
Visionary architects of yesterday and today have built Pittsburgh, guiding its transformation from an industrial city to a powerhouse in advanced manufacturing, technology and green building.

Cathedral of Learning, Heinz Chapel



Locals *love*

One of the great beauties of architecture is that each time, it is like life starting all over again.



Careful restorations have preserved the stunning beauty of 19th century mansions and Pittsburgh's churches, theaters and skyscrapers. Among the many exceptional buildings, old and new, are:

- H.H. Richardson's Allegheny County Courthouse
- The University of Pittsburgh's Cathedral of Learning
- Union Trust Building
- PPG Place
- Benedum Center for the Performing Arts
- August Wilson African American Cultural Center

Courtesy of the **Pittsburgh History & Landmarks Foundation (PHLF)**, take a Downtown walking tour to learn more about landmark buildings and significant urban spaces, or download guides to five free PHLF self-guided walking tours. The City of Pittsburgh gives behind-the-scenes tours of its **City-County Building**, designed by renowned architects Henry Hornbostel and Edward Lee. In Oakland, the city's "second downtown," explore the wonders of **Phipps Conservatory and Botanical Gardens**, including a 14-room glasshouse.

Visit during October and **Doors Open Pittsburgh** will open select, otherwise private, buildings.

The Wright Stuff



Frank Lloyd Wright's Fallingwater

Frank Lloyd Wright believed the mission of an architect is “to help people understand how to make life more beautiful [and] the world a better one for living in.” In the Laurel Highlands, 50 miles from Pittsburgh, his homes are open to the public.

Fallingwater, named to the UNESCO World Heritage List, which represents the first modern architecture designations in the U.S., was a daring architectural triumph when Wright designed the cantilevered home over a waterfall for the Kaufmann family of Pittsburgh.

Nearby, Wright's House on **Kentuck Knob** seamlessly integrates architecture and sculpture into the beautiful landscape. The small, one-story Usonian house has a kitchen as its core.

The natural light-filled **Duncan House** is one of four Wright-designed homes offering overnight lodging. It was dismantled from its original location in Illinois and moved to Polymath Park Resort.

The Genius of Frank Lloyd Wright



Fallingwater
Now on the UNESCO World Heritage List



Kentuck Knob

The beautiful Laurel Highlands is the perfect setting for two outstanding examples of Frank Lloyd Wright's architecture. Reservations for each house, located about 90 minutes southeast of Pittsburgh, are encouraged.

Fallingwater.org
724-329-8501

KentuckKnob.com
724-329-1901





Welcome to the *Neighborhoods*



The old Pittsburgh slogan, **“THE CITY WITH A SMILE ON ITS FACE,”** still rings true when you explore its safe, walkable neighborhoods. Pittsburghers are quick to offer you a chair and welcome you. Many of the 90 neighborhoods have business districts and attractions, while others are mostly residential. But in all of them, you’ll find serious hometown pride on display. Check out what makes Pittsburgh so charming and neighborly.

