



VISITING THE MUSEUM

FROM THE SOUTH:

I-495 North to Exit 49. Turn left on River St./Route 110, go over 495 to first left, Thornton Avenue, then 100 yards up the hill to Museum on left.

FROM THE NORTH:

I-495 South to Exit 49. At exit, turn left on River St./Route 110 and immediate right on Thornton Avenue, then 100 yards up the hill to Museum on left.

HOURS:

The Museum is open Saturdays from 10am to 4pm or by appointment.

CONTACT:

WEB ADDRESS:

museumofprinting.org
for a full schedule of exhibitions, presentations, workshops, and other events.

PHYSICAL ADDRESS:

15 Thornton Ave., Haverhill, MA 01832

MAILING ADDRESS:

PO Box 5580, Beverly, MA 01915

EMAIL ADDRESS:

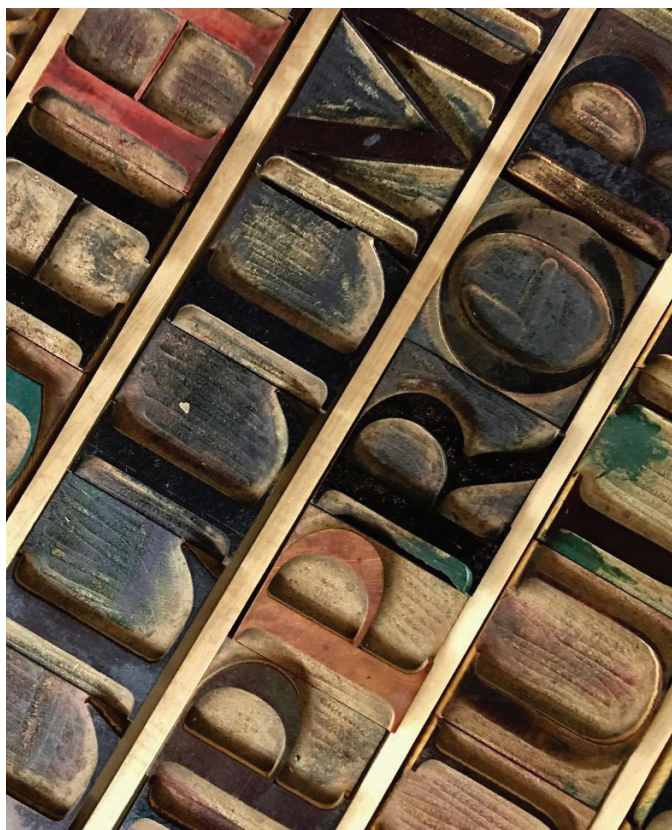
info@museumofprinting.org



VISITOR'S GUIDE



MUSEUM OF PRINTING
HAVERHILL MASSACHUSETTS



DEDICATED TO PRESERVING THE HISTORY OF THE GRAPHIC ARTS

WELCOME

The Museum of Printing is dedicated to preserving the rich history of graphic arts, printing technology, and printing craftsmanship. Founded in 1978, it is the most extensive museum of its kind in the United States, housing a unique collection of rare and historic printing systems.

The Romano Library archives over 6,000 books about printing, and thousands of pieces of print ephemera. The typographic reference library contains an extensive collection of specimen catalogs and books on typography. These libraries are open to scholars, students, writers and the general public for research, by appointment.

The Equipment Gallery holds a fascinating collection of letterpress, hot metal, and cold type equipment. Check out the fancy 1886 Columbian iron hand press, a working Linotype, artifacts from the short-lived phototypesetting era, plus rare office machines and computers. Don't miss the Art Gallery which showcases wood engraving, contemporary poster art, wood type, chromolithography, and more.

ANNUAL MEMBERSHIP

The Museum is supported by memberships and donations. Please join.

INDIVIDUAL MEMBERSHIP — \$50 PER YEAR

This includes free admission to the Museum plus a subscription to our quarterly Museum newsletter, 10% discount on workshops, events, and purchases. Other membership levels with greater benefits are available. See website. Mail to: The Museum of Printing, PO Box 5580, Beverly, MA 01915

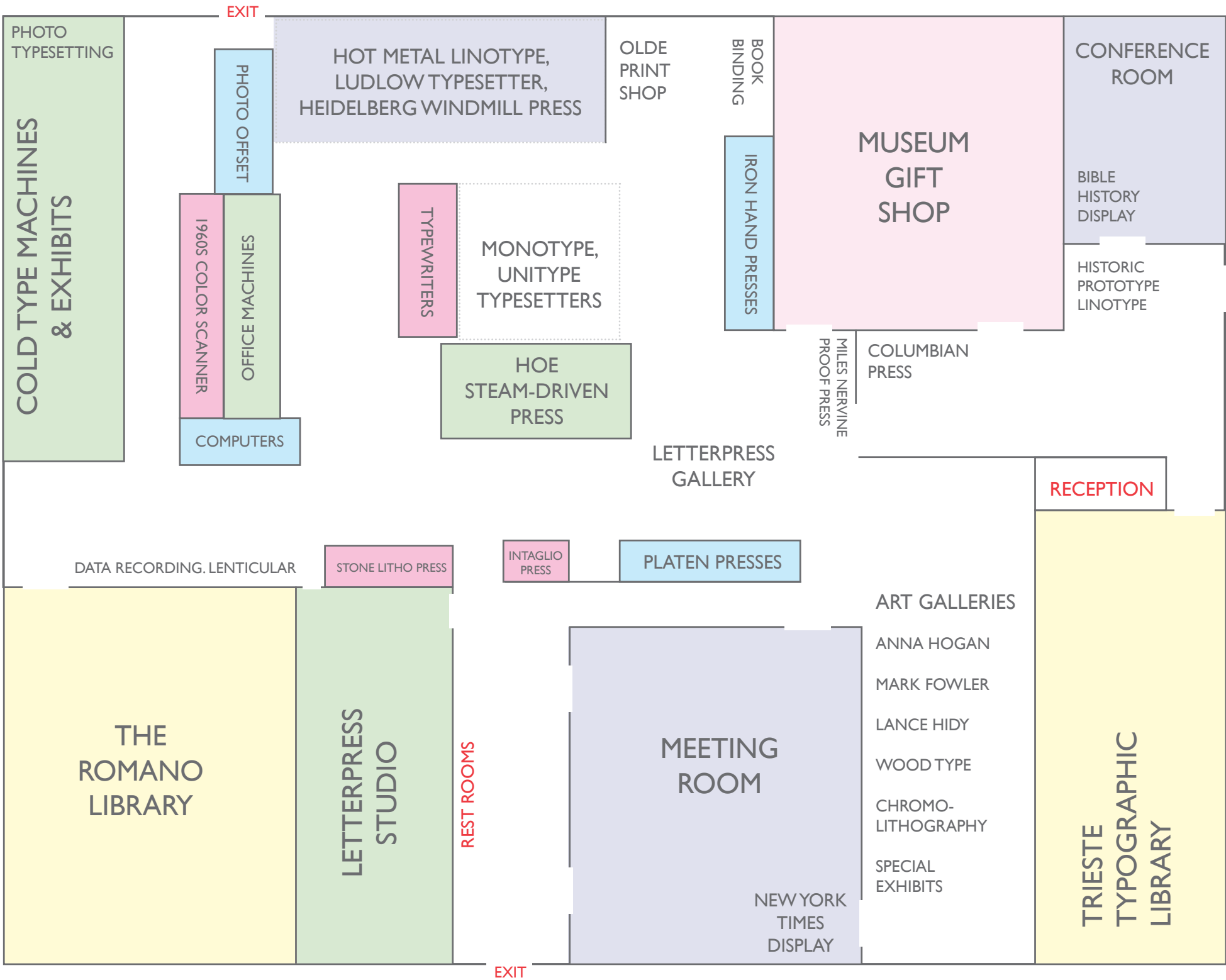
Photography is permitted, however we ask that you please do not touch the exhibits.

ADMISSION:

\$10 (\$8 for seniors and students), members free. Schools and other groups welcome and Museum facilities are available for rental. Registered as a non-profit under Section 501(c)(3) of the IRS Code. Memberships are tax deductible and help to support us.

Follow us on Facebook,
Twitter, and Instagram.





MUSEUM HIGHLIGHTS:

- An 1886 Columbian iron hand press.
- The wood patent model for a Gordon platen press.
- Platen, cylinder, lithography and intaglio presses.
- A re-creation of a vintage print and bindery shop.
- A working Mergenthaler Linotype.
- The metal cylinder plate that printed the NYT page "MEN WALK ON MOON".
- A Japanese typewriter.
- A typewriter you can type on.
- The first Mimeograph, Edison's Model 0.
- The first four Macintosh computer models plus an Apple Lisa.
- A rare Steve Jobs NeXT computer.
- A 1960's million-dollar scanner.
- The largest collection of phototypesetting machines in the world.
- The history of recorded media from punch cards to USB.
- A 6,000-book library devoted to graphic arts.
- A special typographic reference library.
- The original drawings for the major typefaces of the 20th century.
- A Museum Gift Shop with unique gifts and letterpress items.
- A fully equipped letterpress studio.