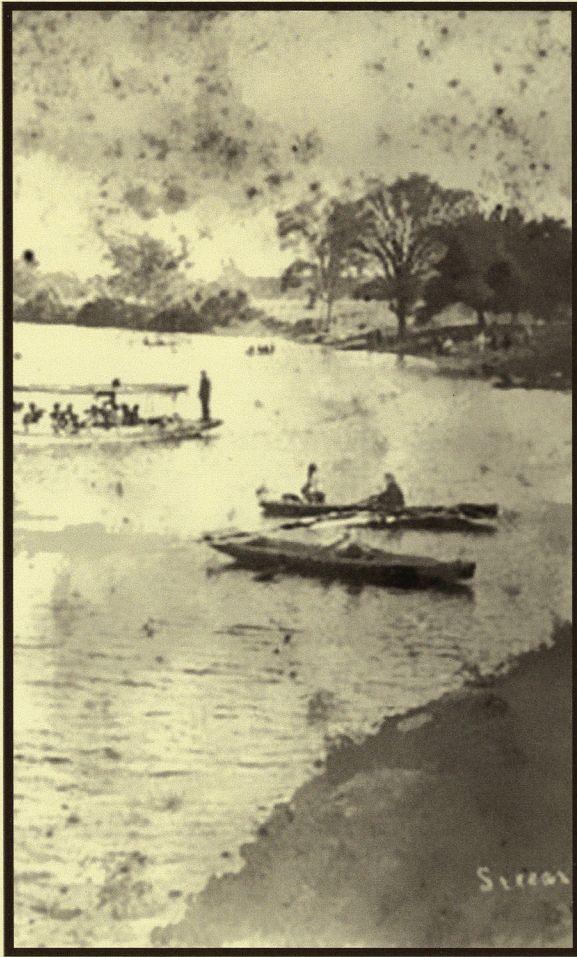


Spring Lake Nature Park is named for a large, spring-fed lake that area residents enjoyed for many years.



Recreation at Spring Lake, circa 1900

In the late 1800s, a dam was constructed to maintain water levels for ice production. Large blocks of ice from the lake were used for ice boxes before electric refrigerators were invented. The dam was destroyed once ice was no longer needed, leaving meandering streams and falls. Today, local volunteers have revitalized this beautiful natural land with trails and other amenities for everyone to enjoy.

Spring Lake Nature Park Wildflowers

Look for these wildflowers on the trails!

OUR STORY



Wild Geranium
Geranium maculatum



Golden Ragwort
Senecio aureus



Bloodroot
Sanguinaria canadensis

For information, contact
Doug Patterson

(815) 257 3528
dbp44@yahoo.com

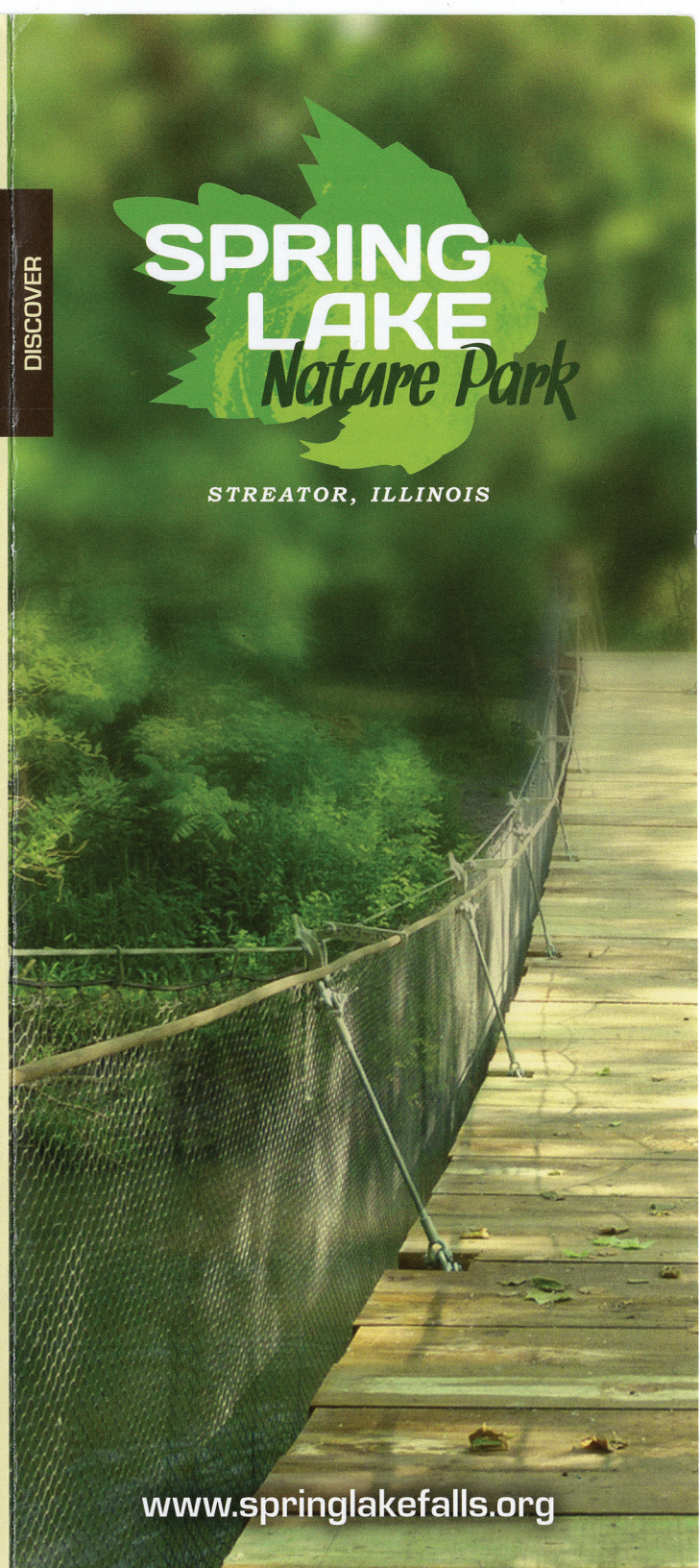
www.springlakefalls.org

Compliments of Streator Tourism

DISCOVER

SPRING LAKE Nature Park

STREATOR, ILLINOIS



www.springlakefalls.org

Spring Lake Nature Park: Recreation in a Natural Environment

Open year-round sunrise until sunset

Discover 37.2 acres of city-owned natural land, including two creeks, a sandstone formation waterfall, trails, and abundant Illinois wildlife. The people of Streator invite you to enjoy **hiking, biking, fishing, bird watching, horseback riding, dog walking, and photography** during your visit. (bring your own horse)

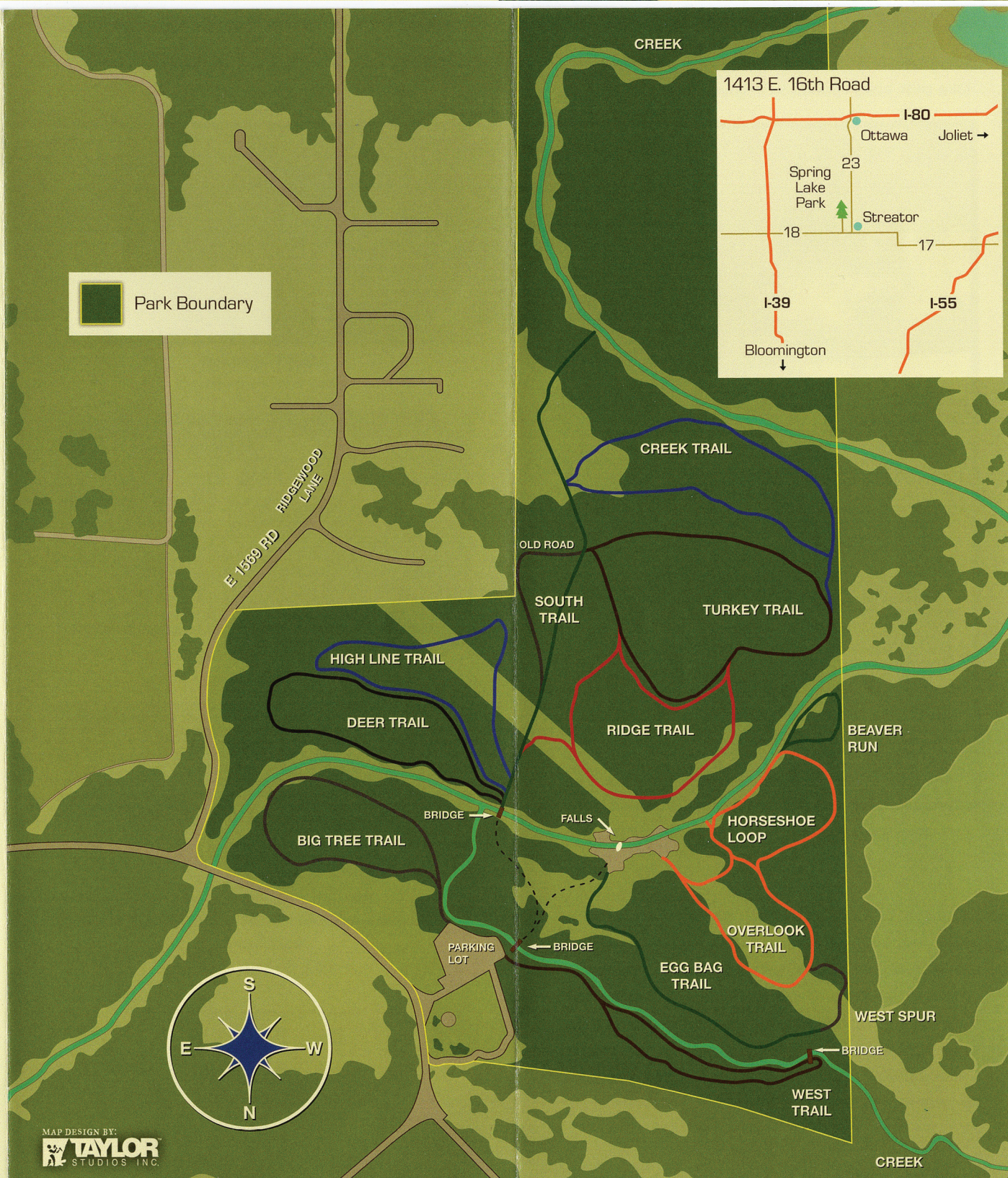
Please help keep the park clean and safe by following City of Streator ordinances and Illinois state law:

- No motorized vehicles
- No alcohol
- No swimming
- No hunting or firearms
- No dumping of trash
- No loud music or boisterous activity
- No solicitation or selling of merchandise
- Groups of 25 or more must be reported in advance to the City Clerk's office
- Dogs must be leashed at all times

Explore the Trails!

- You can explore twelve different trails, most a half mile or less in length.
- Hikers, bikers, and horses share the same trails. Caution is advised when meeting; horses are easily startled.
- Please stay on the trails and be alert to changing conditions, such as fallen tree limbs, poison ivy, and wet soil.

www.springlakefalls.org



MAP DESIGN BY:
TAYLOR
STUDIOS INC.