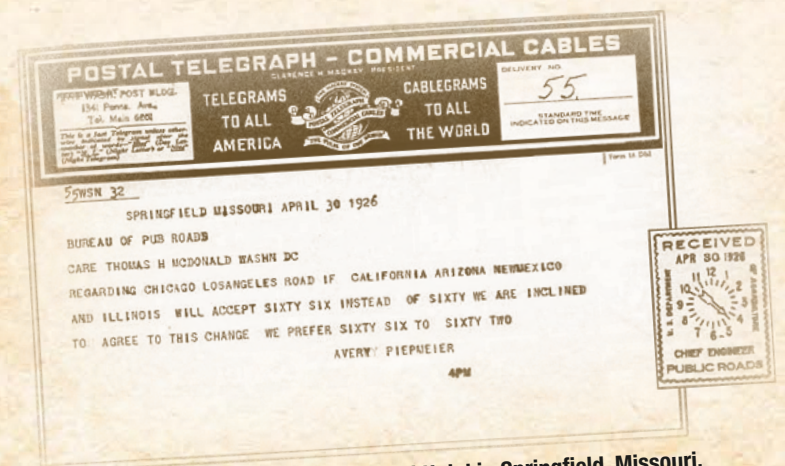
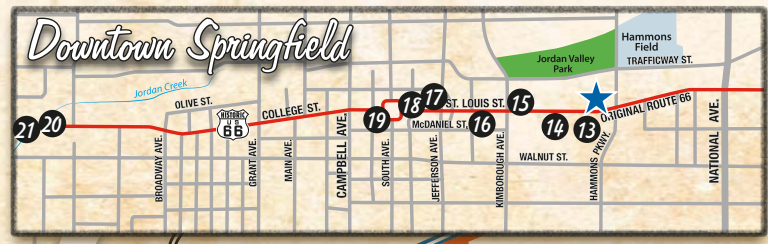


# MISSOURI U.S. 66 In Springfield



The telegram sent from the Colonial Hotel in Springfield, Missouri, on April 30, 1926 is the first recorded use of 66 for the new route.



## Springfield & Southwest Missouri Route Maps



815 East St. Louis Street  
(On Old Route 66 in Downtown Springfield)  
Hours: Mon - Fri, 8am - 5pm

800-678-8767 417-881-5300  
[www.SpringfieldMO.org](http://www.SpringfieldMO.org)



Get Your Kicks  
in the Birthplace of  
Route 66



### Fun Stops and Photo Ops Along Route 66

- 1 **Devils Elbow 1923 Steel Bridge** – 573-336-6355 – Call today for turn-by-turn Route 66 Driving Tour of Pulaski County!
- 2 **Munger Moss Motel** – 1336 East Route 66, Lebanon, 417-532-3111 – Your home away from home on Route 66 for over fifty years.
- 3 **Route 66 Museum (LaFlede County)** – 915 S. Jefferson Ave., Lebanon - The museum is located inside the Library 2 blocks south of Route 66.
- 4 **Shepherd Hills Factory Outlets** – I-44 Exit 127, Lebanon, 417-532-7000 – Open 8 am – 8 pm Daily Case Knives, Wüsthof, Buck!
- 5 **Hubble Space Telescope Replica** – On the town square in Marshfield – Named after astronomer and Marshfield native, Edwin P. Hubble, the 1/4 scale replica is displayed on the courthouse lawn.
- 6 **Joe's Route 66 Diner** – 201 E Chestnut St., Strafford – STOP-REST-ENJOY made daily burgers, pork loin, and onion rings.
- 7 **Air & Military Museum of the Ozarks** – 2305 E. Kearney St., Springfield, [www.ammomuseum.org](http://www.ammomuseum.org), 417-864-7997 - Hands-on museum, many exhibits can be touched and sat in.
- 8 **Rest Haven Court** – 2000 E. Kearney St., Springfield, 417-869-9114 – Since 1947, this motel has been taking care of Springfield guests traveling Route 66.
- 9 **Original Rt. 66 Road** – S.E. corner of Kearney & Glenstone, Springfield – Drive a patch of the original Route 66 and take a photo in front of the marker.
- 10 **Pythian Castle** – 1451 E. Pythian St., Springfield, [www.pythiancastle.com](http://www.pythiancastle.com) – Built in 1913 by the Knights of Pythias, this certified haunted castle is rich in history.
- 11 **Best Western Route 66 Rail Haven** – 203 S. Glenstone Ave., Springfield, [www.bwraihaven.com](http://www.bwraihaven.com), 800-304-0021 – Opened in 1938 as the Rail Haven Motel, this is one of Springfield's oldest operating hotels.
- 12 **Steak 'n Shake** – 1158 E. St. Louis St., Springfield – Outside, this Route 66 icon still offers curb-side service. Inside, enjoy the 1950's-style decor.
- 13 **University Plaza Hotel** – 333 S. John Q. Hammons Pkwy., Springfield, [www.upspringfield.com](http://www.upspringfield.com), 417-864-7333 – Modern accommodations on old Route 66, pool, whirlpool, restaurant, fitness center. Pets welcome.
- ★ **Route 66 Springfield Visitor Center** – 815 E. St. Louis St., Springfield – Route 66 souvenirs and all the information you need for your visit.
- 14 **Kentwood Arms Hotel** – 700 E. St. Louis St., Springfield – Built in 1926, this majestic hotel served "discriminating travelers." It now houses MSU students.
- 15 **Abou Ben Adhem Shrine Mosque** – 601 E. St. Louis St., Springfield – Built in 1923, this unique building has a museum and serves as a community event venue.
- 16 **Discovery Center** – 438 E. St. Louis St., Springfield, [www.discoverycenter.org](http://www.discoverycenter.org) – An interactive hands-on science center for all ages.
- 17 **Woodruff Building** – St. Louis St. & Jefferson Ave., Springfield – The area's first skyscraper was built in 1911 by John T. Woodruff, the first president of the National Highway 66 Association.
- 18 **Gillioz Theatre** – 325 Park Central East, Springfield – This opulent movie house opened in 1926 and was a premier entertainment venue.
- 19 **Park Central Square** – Downtown Springfield - Designed by renowned landscape architect Lawrence Halprin, it is the site of the 1865 Wild Bill Hickok shoot out.
- 20 **Mother Road Antiques & Uniques** – 1031A W. College St., Springfield – The biggest little antique shop on Route 66.
- 21 **Route 66 Park & Mosaic** – W. College St. between Fort & Broadway Aves., Springfield – The mosaic runs along the south and the new park is across the street.
- 22 **Mansion at Elfindale/Saviello's Café** – 1701 S. Fort Ave., Springfield, 800-443-0237, 417-831-5400 – Built in 1892, 13-suite mansion, private baths, internet and cable. Café is open for breakfast and lunch.
- 23 **Vintage Suitcase Gifts & Tea Room** – 211 E. Commercial St., Springfield – Antiques, furniture, home décor and clothing. Lunch and to-die-for desserts.
- 24 **Best Western Plus Airport Inn** – 4445 W. Chestnut Expwy., Springfield, 417-799-2200, 877-799-2244 – Relax at the Inn. Indoor pool, fitness center, internet and complimentary full breakfast.
- 25 **Springfield/Route 66 KOA Campground** – 5775 W. Farm Rd. 140, Springfield, 417-831-3645 – Camping, cabins, store, snacks and unique Rt. 66 gifts!
- 26 **Gay Parita** – 3 miles west of Halltown on Old 66 – At this restored service station you'll find a wealth of information about Route 66.
- 27 **Jasper County** – [www.visit-carthage.com](http://www.visit-carthage.com), 417-359-8181 – Historic sites, galleries, museums, Victorian architecture and the World's only Precious Moments Chapel & Gardens.
- 28 **Webb City Chamber of Commerce** – 112 W. Broadway St., Webb City, [www.webbcitychamber.com](http://www.webbcitychamber.com), 417-673-1154 – Stop by our office in a restored gas station. Webb City offers a variety of events and places to visit.
- 29 **Candy House** – 510 S. Kentucky Ave., Joplin, 417-623-7171 – Rt. 66 themed candy. Free factory tours, Mon-Fri 10-2. We love buses!



Like us at...  
[facebook.com/SpringfieldMissouri](https://facebook.com/SpringfieldMissouri)



Follow us at...  
[twitter.com/springfieldcvb](https://twitter.com/springfieldcvb)

Share photos of your trip on Route 66 by tagging #sgf66 on Twitter, Facebook and Instagram.

Designed, produced and distributed by the



Convention & Visitors Bureau

Printed 11/2015

Printed on old Route 66 in Springfield, Missouri  
by Cantrell-Barnes Printing & Disc Works



# Across Southwest Missouri



28 112 W. Broadway St., Webb City



27 302 S. Main St., Carthage



22 1031A W. College St., Springfield



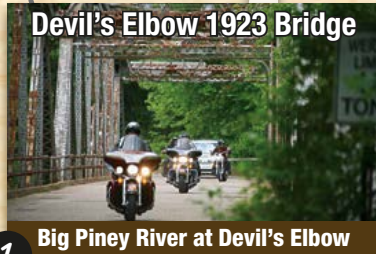
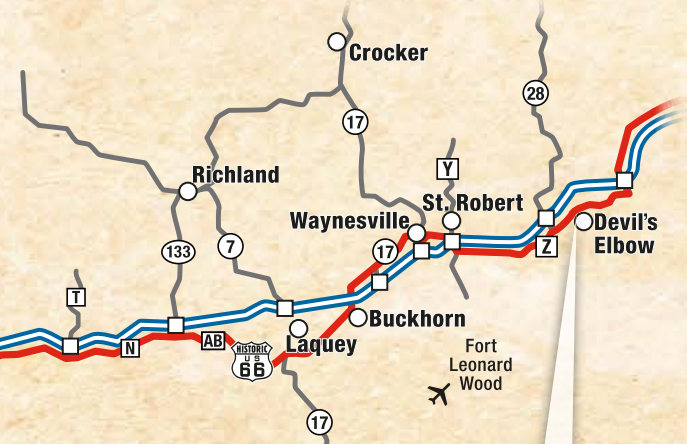
815 E. St. Louis St., Springfield



77 1451 E. Pythian St., Springfield



9 2000 E. Kearney St., Springfield



1 Big Piney River at Devil's Elbow



2 1336 E. Route 66, Lebanon



26 Old Route 66, Paris Springs



4 I-44 Exit 127, Lebanon



3 915 S. Jefferson Ave., Lebanon



6 201 E. Chestnut St., Strafford



11 203 S. Glenstone Ave., Springfield



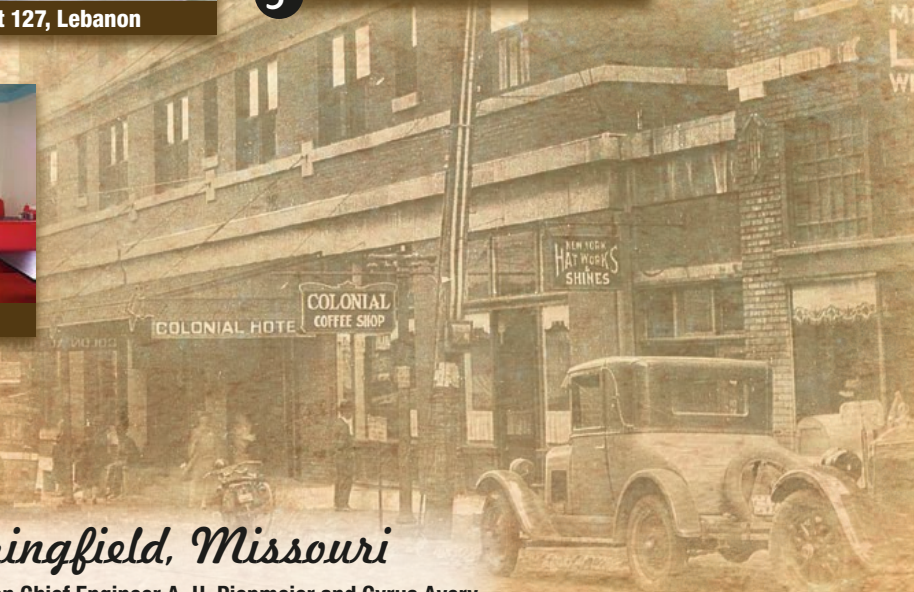
12 1158 E. St. Louis St., Springfield



15 601 E. St. Louis St., Springfield



29 510 S. Kentucky Ave., Joplin



## Born in Springfield, Missouri

Missouri State Highway Commission Chief Engineer A. H. Piepmeier and Cyrus Avery, chairman of the Oklahoma Department of Highways, sent a telegram from the Colonial Hotel in Springfield, Missouri, on April 30, 1926, designating the new highway as U.S. Highway 66. The route was officially approved on November 11, 1926.

See other side for a full list of "Fun Stops and Photo Ops" along Route 66