

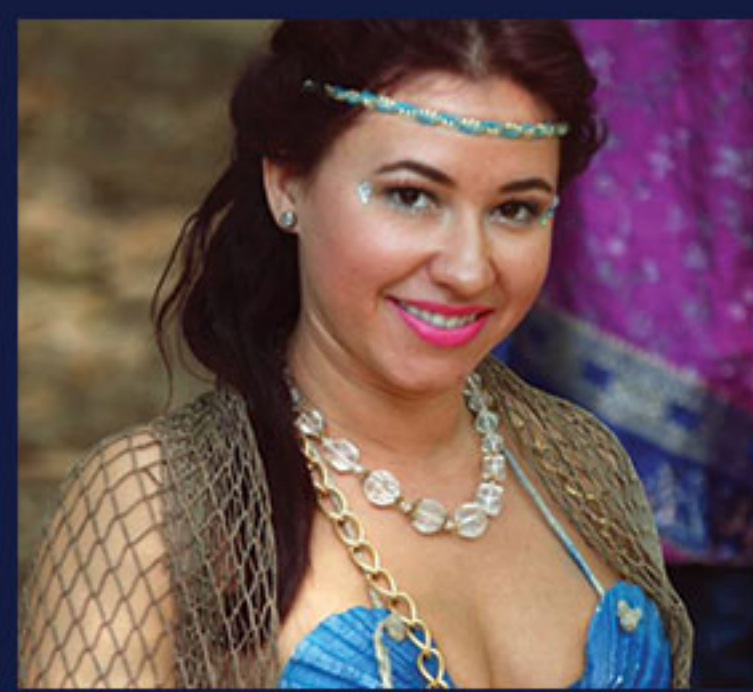
2015 Kansas City  
**Renaissance Festival**



**Live the Legend!**

**NEW IN 2015!**

Wizard's Flight School Zip Line  
Queen's Tea • Kid's Quest  
Craft Beer Pub & Daily Tastings  
50 Free Kid's Activities



7 Themed Weekends • Full Combat Jousting  
20 Stages of Non-Stop Entertainment  
165 Artisan Booths for Endless Shopping  
Food & Drink Fit for a King  
Mermaids, Fairies & more!

★ **Free Parking provided by** **OLATHE** ★  
LINCOLN

Open Weekends September 5 - October 18  
Plus Labor Day & Columbus Day • 10am to 7pm  
Rain or Shine • 913.721.2110 • #KCRenFest



**KCRENFEST.COM**



# Theme Weekends!



**Wonders of the World**  
Sept. 5, 6 & 7



**Highland Fling**  
Sept. 12 & 13



**Pet Fest**  
Sept. 19 & 20



**Shamrocks & Shenanigans**  
Sept. 26 & 27



**Wine, Chocolate & Romance**  
Oct. 3 & 4



**Oktoberfest**  
Oct. 10 & 11



**Harvest Huzzah**  
Oct. 12



**Pirates Ale Fest**  
Oct. 17 & 18

## Daily Royal Events!

### Beer & Bacon Tasting

Daily at 3:30pm • 21+ with valid ID  
\$20 per person

### Bawdy Beer Show

Daily at 4:30pm • 21+ with valid ID  
\$15 per person

### Royal Pub Crawl

Daily at 11:00am, 2:00pm & 4:00pm  
21+ with valid ID  
\$25 per person

### Queen's Tea

Daily at 2:00pm  
\$9.95 per person

### Royal Romance Package

Daily at 11:30am, 2:00pm, 3:30pm & 5:00pm • 21+ with valid ID  
\$69.95 per couple

### Royal Wine Tasting

Daily at 3:30pm • 21+ with valid ID  
\$15 per person



## White Stag Inn



Located in Wildwoode • Open from 11am to 3pm  
Dine at your leisure at our sit-down restaurant!

Contact us about Weddings, Birthday Parties, Special Events, Group Discounts & more!

sales@kcrenfest.com • 913.721.2110 • KCRenFest.com

## Thank you to our Sponsors!



## Festival Gate Admission Prices:

Advance Adult Admission \$17.95    Advance Child Admission \$10.45  
General Adult Admission \$20.95    General Child Admission \$11.95

Discount Tickets available online or at participating locations

