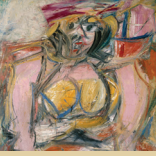


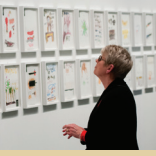
# L LOBBY LEVEL

In the Bloch Building

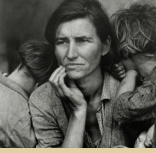
Contemporary  
L2-L7



Project Space  
L8  
(temporary exhibit)



Photography  
L10-L11  
(works on view rotate)



African  
L9



Noguchi Court  
L12



Featured Exhibitions  
L13-L15



Museum Store



In the Nelson-Atkins Building

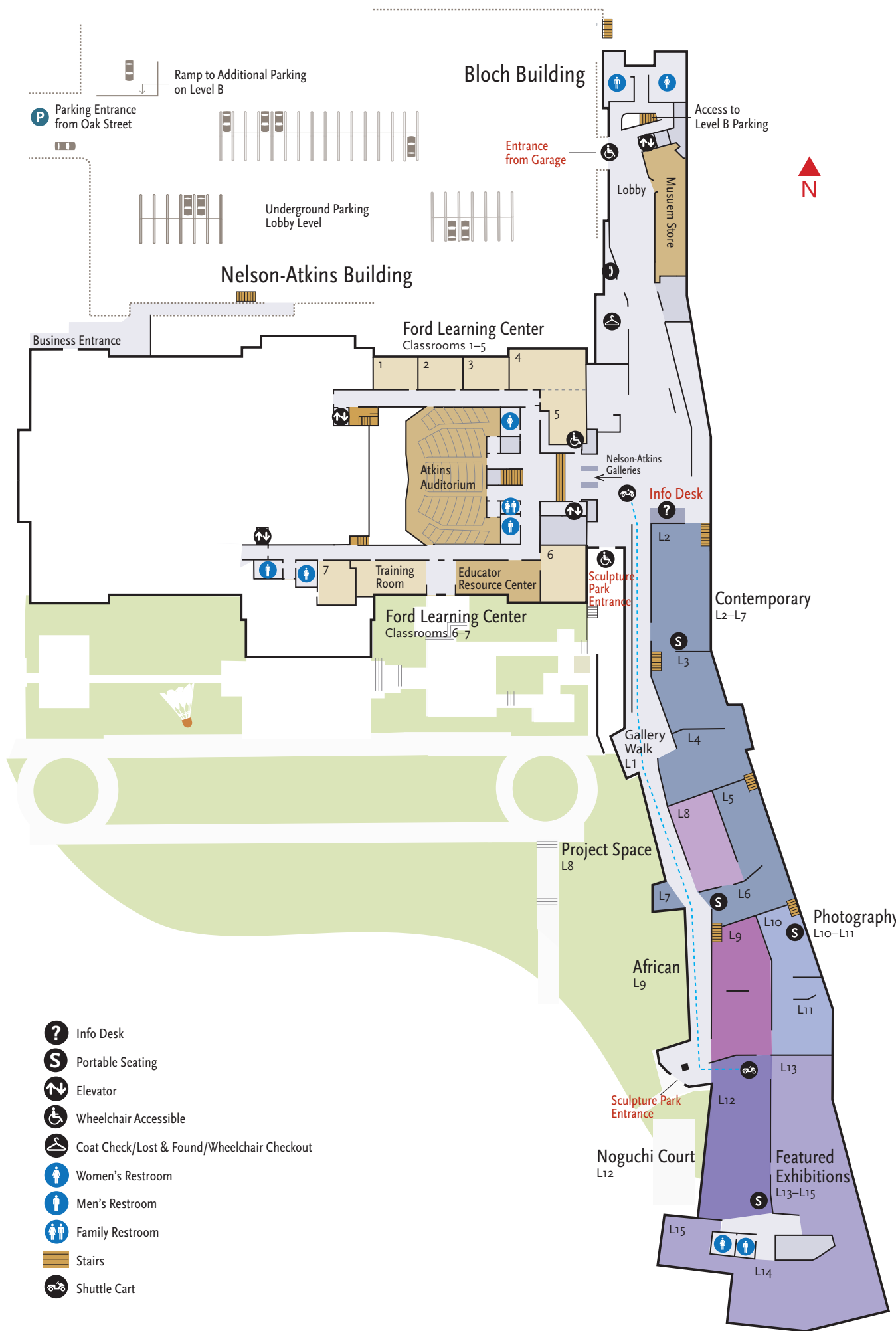
Educator Resource Center  
The ERC offers materials for teachers and education professionals.



Atkins Auditorium



# PLAZA LEVEL



- Info Desk
- Portable Seating
- Elevator
- Wheelchair Accessible
- Coat Check/Lost & Found/Wheelchair Checkout
- Women's Restroom
- Men's Restroom
- Family Restroom
- Stairs
- Shuttle Cart



# P PLAZA LEVEL

In the Nelson-Atkins Building

Egyptian, Greek  
and Roman  
P1-P4



European  
200 C.E.-1500  
P5-P6



European  
1500-1600  
P7-P11



English  
Pottery  
P12



European  
1600-1800  
P13-P23



European  
1750-1950  
P24-P30



Sculpture Hall



Kirkwood Hall



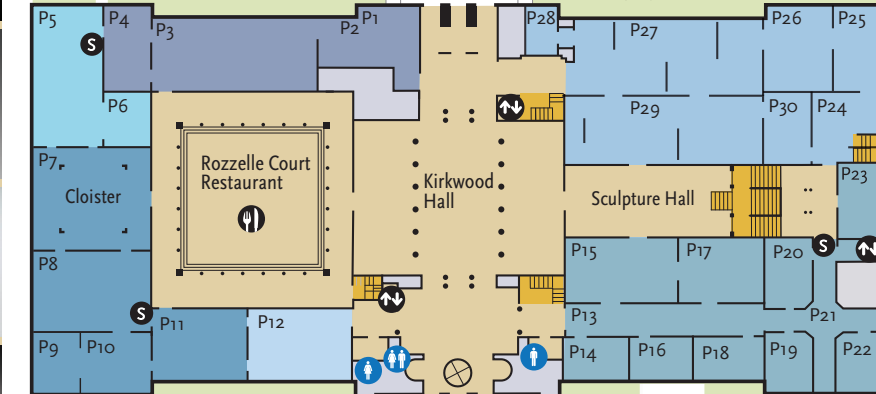
Rozzelle Court  
Restaurant



European  
200 C.E.-1500  
P5-P6

Egyptian, Greek  
and Roman  
P1-P4

European 1750-1950  
P24-P30



European 1500-1600  
P7-P11

English  
Pottery  
P12

European 1600-1800  
P13-P23

Lobby  
Mezzanine  
Between  
Plaza and  
Level 2

- Portable Seating
- Elevator
- Wheelchair Accessible
- Women's Restroom
- Men's Restroom
- Family Restroom
- Stairs

Bloch Building

Plaza Entrance

Lobby



# 2 LEVEL TWO

In the Nelson-Atkins Building

Chinese

201, 202, 204,  
221-224,  
229-232



South Asian

203, 225-228



Japanese

205



American Indian

206-208



American

210-220



Rozzelle Balcony



In the Bloch Building

Spencer Art Reference Library

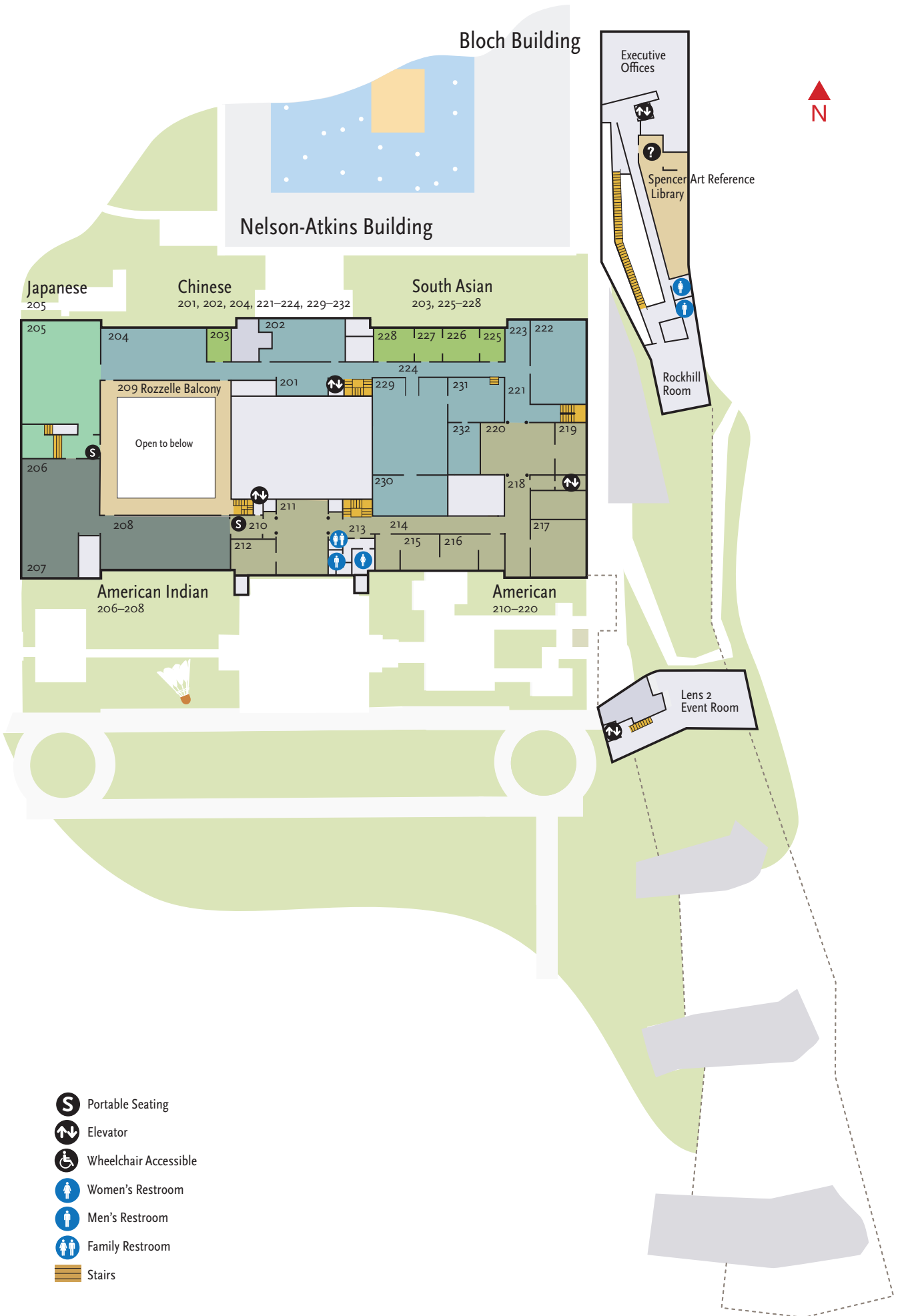
Print and online resources available in the public reading room.



Lens 2 Event Room



- Portable Seating
- Elevator
- Wheelchair Accessible
- Women's Restroom
- Men's Restroom
- Family Restroom
- Stairs



# THE DONALD J. HALL SCULPTURE PARK

Located on the grounds of The Nelson-Atkins Museum of Art, the 22-acre Sculpture Park is home to the nation's largest collection of monumental bronze sculptures.

- |    |   |    |  |
|----|---|----|--|
| 1  | Magdalena Abakanowicz<br><i>Standing Figures (Thirty Figures)</i> | 11 | Henry Moore<br><i>Three-Part Object</i>  |
| 2  | Claes Oldenburg<br>Coosje van Bruggen<br><i>Shuttlecocks</i>      | 12 | Charles Heit<br>Kenny Mowatt<br><i>Totem Pole</i>  |
| 3  | Walter De Maria<br><i>One Sun / 34 Moons</i>                      | 13 | George Rickey<br><i>Two Planes Vertical-Horizontal</i>                                   |
| 4  | George Segal<br><i>Rush Hour</i>                                  | 14 | Henry Moore<br><i>Relief No. 1</i>   |
| 5  | Joel Shapiro<br><i>Untitled</i>                                   | 15 | Auguste Rodin<br><i>The Thinker</i>  |
| 6  | Gaston Lachaise<br><i>Bas-Relief Woman</i>                        | 16 | Judith Shea<br><i>Storage</i>  |
| 7  | Jacques Lipchitz<br><i>Return of the Prodigal Son</i>             | 17 | Henry Moore<br><i>Reclining Figure: Hand</i>   |
| 8  | Auguste Renoir<br><i>The Large Bather</i>                         | 18 | Henry Moore<br><i>Three-Way Piece No. 1: Points</i>                                      |
| 9  | Jacques Lipchitz<br><i>Peace on Earth</i>                         | 19 | Henry Moore<br><i>Two-Piece Reclining Figure No. 9</i>                                   |
| 10 | Henry Moore<br><i>Torso</i>                                       | 20 | Henry Moore<br><i>Upright Motive No. 9</i>   |
|    |   | 21 | Henry Moore<br><i>Seated Woman</i>   |
|    |   | 22 | Robert Morris<br><i>Glass Labyrinth</i><br><i>May be closed during inclement weather</i> |
|    |   | 23 | Henry Moore<br><i>Sheep Piece</i>  |
|    |   | 24 | Henry Moore<br><i>Large Interior Form</i>  |
|    |   | 25 | Henry Moore<br><i>Reclining Connected Forms</i>  |
|    |   | 26 | Henry Moore<br><i>Large Totem Head</i>   |
|    |   | 27 | Henry Moore<br><i>Large Torso: Arch</i>  |
|    |   | 28 | Roxy Paine<br><i>Ferment</i>   |
|    |   | 29 | Ursula von Rydingsvard<br><i>Three Bowls</i>   |
|    |   | 30 | Tony Cragg<br><i>Ferryman</i>  |
|    |   | 31 | Tony Cragg<br><i>Turbo</i>   |
|    |   | 32 | Alexander Calder<br><i>Tom's Cubicle</i>   |
|    |   | 33 | Mark Di Suvero<br><i>Rumi</i>  |

Go to [naguide.org](http://naguide.org) and enter the number on select sculpture labels to hear audio recordings.



Through December 3, 2017

The Donald J. Hall Sculpture Park expands into Theis Park with a seven-sculpture installation by Eduardo Chillida

Frank A. Theis Park

- E** Emergency call station
- Path grade 10% or less
- Accessible entrance
- ≡ Stairs

FREE admission  
Open year-round, dawn to dusk