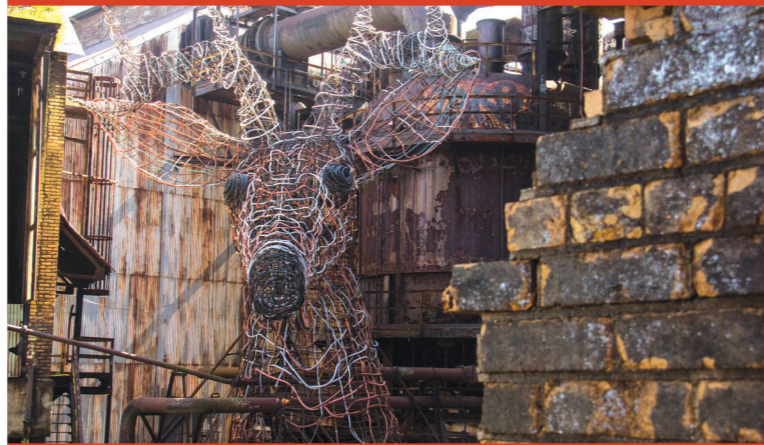


RIVERS OF STEEL NATIONAL HERITAGE AREA

Created over eons, as water carved away layers of the Allegheny Plateau, southwestern Pennsylvania's hilly topography set the stage for entrepreneurs. Over time, this land and the local economy continued to transform. Colonial agriculture gave way to boatbuilding and river trade. Business shifted from commerce to industry, making use of the region's natural resources for glassmaking, coal mining, and small scale iron production, which laid the groundwork for the "Big Steel" era of the 20th century. Industries waxed and waned—each innovating and building upon the one that preceded it—before evolving into today's dynamic landscape.

The Rivers of Steel National Heritage Area celebrates the region's industrial history, the landscape that fueled it, and the hardworking men and women who made it possible, linking the communities of the region through their shared cultural and industrial heritage.

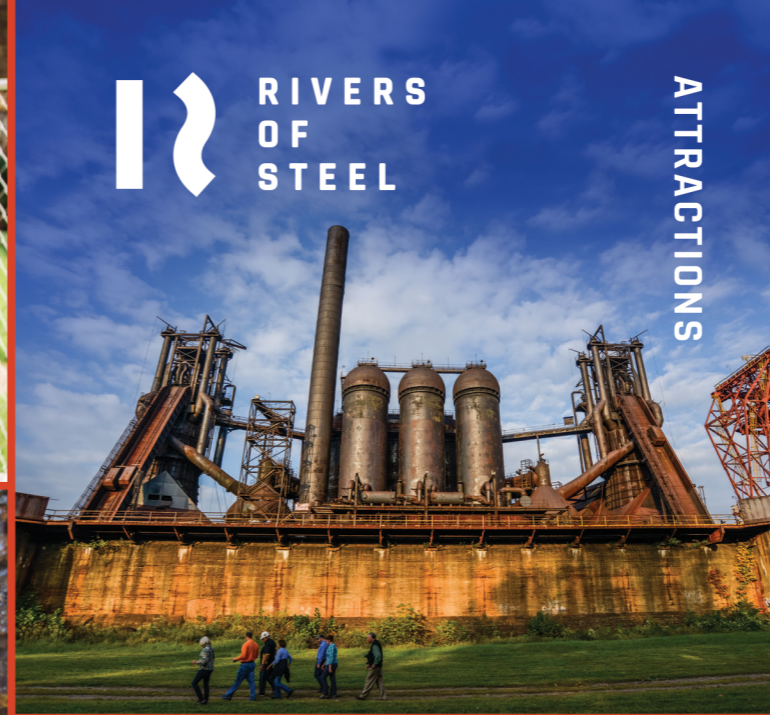
The eight-county region is one of 49 National Heritage Areas across the United States and one of 12 State Heritage Areas in Pennsylvania. It is managed by the Rivers of Steel Heritage Corporation, a nonprofit which works in partnership with the National Park Service and the Pennsylvania Department of Conservation and Natural Resources. Through these public-private partnerships, Rivers of Steel supports heritage conservation, heritage tourism, and outdoor recreation as a means to foster economic redevelopment and enhance cultural engagement.



Rivers of Steel

The Bost Building, 623 East Eighth Avenue
Homestead, Pennsylvania 15120

riversofsteel.com
412.464.4020



ABOUT RIVERS OF STEEL

Founded on the principles of heritage development, community partnership, and a reverence for the region's natural and shared resources, Rivers of Steel strengthens the economic and cultural fabric of western Pennsylvania by fostering dynamic initiatives and transformative experiences.

Rivers of Steel actively promotes education and heritage tourism through its attractions and programs, highlighting western Pennsylvania's assets to regional, national, and international audiences. Behind-the-scenes, Rivers of Steel works with a diverse network of community partners to support grassroots initiatives and the new regional economy.



RIVERS OF STEEL'S ATTRACTIONS SHOWCASE THE ARTISTRY AND INNOVATION OF OUR REGION'S RICH HERITAGE.



CARRIE BLAST FURNACES

A remnant of the once massive, legendary U.S. Steel Homestead Works, the Carrie Blast Furnaces are also a vestige of Pittsburgh's 20th-century domination of the steel industry. Located in Rankin & Swissvale, PA, the National Historic Landmark is open for public tours May through October. In addition to the *Industrial History* tour, visitors can discover more about the site on the *Post-industrial: Arts & Grounds* tour. Rivers of Steel also offers family-friendly festivals, engaging arts workshops, and unique programs here throughout the season, in addition to making the space available for private tours and rental events year round.

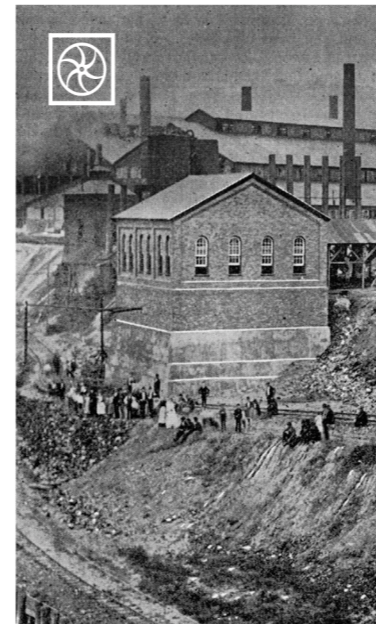


THE EXPLORER RIVERBOAT

Pittsburgh's premier green riverboat, the 94-foot *Explorer* offers sightseeing tours, public and student programs, private events, and corporate charters through Rivers of Steel. Docked on Pittsburgh's North Shore, near the headwaters of the Ohio River, an excursion on *Explorer* offers unparalleled opportunities to experience the beauty and history of Pittsburgh from its majestic rivers. Individuals and groups alike can schedule a voyage for the *PGH 101: An Intro to Innovation* sightseeing tour.

THE PUMP HOUSE

Located in Munhall, PA, the Pump House was the site of the 1892 Battle of Homestead, a defining moment in the nation's labor history. Along with the adjacent water tower, it sits on the banks of the Monongahela River. The Mon provided millions of gallons of water each day to cool the Homestead Works, one of world's largest and most productive steel-producing plants. Private and group tours of the historic site bring the tumultuous events of 1892 to life and reveal the tremendous industrial legacy of the mill.



THE BOST BUILDING

Built in 1892 as a hotel for the rapidly growing worker's ward of Homestead, the Bost Building was at the center of one of American labor history's most dramatic episodes—the Homestead Lockout and Strike. Now a National Historic Landmark, the Bost Building serves as the Visitors' Center for the Rivers of Steel National Heritage Area. Guests can enjoy permanent exhibits on the 1892 Battle of Homestead and on the U.S. Steel Homestead Works, in addition to temporary exhibitions that often draw from Rivers of Steel's extensive archival collections.



THE W.A. YOUNG & SONS FOUNDRY AND MACHINE SHOP

Distinguished by a network of machines linked by a line-shaft power system, along with a blacksmith shop, foundry, and pattern shop, the Machine Shop (as it's known locally), received recognition as a National Historic Landmark in 2017. Built in 1900, the shop produced parts for steamboats, coal mines, railroads, and for local businesses. When it closed in 1965 the building was locked, leaving all of its tools, equipment, and machinery in place—a perfectly preserved representation of the transition from the 1800s village blacksmith to the large machine shops of the 1900s. Public and private tours are available—visit riversofsteel.com for details.