

Built in 1926 to celebrate Swedish heritage and culture in the US, the ASHM is the oldest Swedish-American museum in the country.



The permanent galleries were designed over an 85 year period and each has a unique style and décor. Step inside a 19th century farm house, take in the setting of an art deco lounge, or surround yourself with contemporary Swedish design.



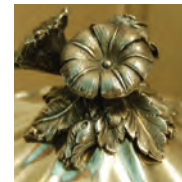
The museum's collection includes fine and decorative art from the 18th to the 21st century, as well as objects related to Swedish history, music, literature, architecture, science and engineering.



Celebrations and Traditions

Sharing Swedish culture means celebrating many Swedish holidays and traditions throughout the year. From Christmas and the Saint Lucia festivities to marking the summer solstice at Midsommar with food, music and maypole dances, ASHM keeps Swedish traditions alive all year long. Whether you want to connect with your familial heritage or experience the traditions of another culture, join us for one of our many annual programs.

In addition to our traditional events, we also offer Swedish language and cooking classes, musical programs, lectures and workshops. Visit americanswedish.org for complete event information.



Education

The museum offers a variety of education programs for children and school groups, both on and off site. Guided tours and group rates for adults are also available.

The Museum Shop

Treat yourself to something uniquely Swedish! The Museum Shop offers everything from Swedish candies, to imported textiles, table wares, and holiday decorations, as well as children's literature and the latest in Scandinavian fiction.

Facility Rental

Make your next special event a memorable one! The ASHM offers a unique and beautiful setting for events. From weddings to business gatherings, the museum has indoor and outdoor space that can accommodate up to 200 guests. We offer affordable rates, easy access and free parking.



Membership Application

Four easy ways to join!

- **Online** at www.americanswedish.org
- **By mail.** Return this form to:
American Swedish Historical Museum
Attn: Membership
1900 Pattison Avenue
Philadelphia, PA 19145-5901
- **By phone** at 215.389.1776
- **In person** at the ASHM Admission Desk or Museum Shop

For more information, please call 215-389-1776.

Please print all information as you wish it to appear on the membership roster.

Name(s) _____

Address _____

City _____

State _____ Zip _____

Telephone _____

Email _____

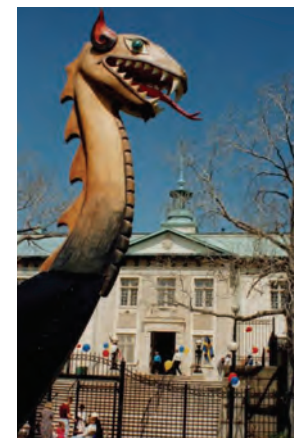
- | | |
|---|--|
| <input type="radio"/> \$35: Senior/Student | <input type="radio"/> \$250: Sustaining |
| <input type="radio"/> \$50: Individual | <input type="radio"/> \$500: Patron |
| <input type="radio"/> \$65: Household | <input type="radio"/> \$1,000: Key Contributor |
| <input type="radio"/> \$75: Organizational
(Non-profit only) | <input type="radio"/> \$2,500: Life |
| <input type="radio"/> \$125: Friend | |

Make check payable to ASHM
or charge my: VISA MasterCard Discover

Account # _____

Exp Date _____

Please detach here and return.



Membership

Become an ASHM member and enjoy everything that the museum has to offer all year long. Basic benefits include:

- free museum admission
- free or discounted admission for museum programs
- guest passes
- 10% off in the museum shop
- invitations to exhibitions and special events
- our quarterly newsletter
- free movie rentals from our Swedish Film collection
- discounted subscription rate to *Sweden & America Magazine*
- reciprocal membership at other national Scandinavian and history museums.

Membership Categories

- Individual** \$50
(\$38 tax deductible)
Basic benefits and two guest passes.
- Senior** (age 65+) \$35
Full-time Student \$35
(\$23 tax deductible)
Basic benefits and two guest passes.
- Household** \$65
(\$41 tax deductible)
Members living at the same address. Basic benefits and four guest passes.
- Organizational** \$75
Membership for non-profit organizations. Basic benefits and four guest passes, plus listing in the Museum's Annual Report.
- Friend** \$125
(\$101 tax deductible)
Same benefits as Organizational Member.
- Sustaining** \$250
(fully tax deductible)
Same as Friend Member, with unlimited guest passes, and invitations to special donor events.
- Patron** \$500
(fully tax deductible)
Same benefits as Sustaining Member, plus one annual rental of the museum at 50% discount.

- Key Contributor** \$1,000
(fully tax deductible)
Same as Patron Member, plus a private tour of the museum.
- Life Time Membership** \$2,500
(fully tax deductible)
Same Benefits as Key Contributor Member, with no need to renew from year to year.

Your membership contribution to the American Swedish Historical Museum is tax deductible to the extent allowed by law.


The official registration and financial information of ASHM may be obtained from the Pennsylvania Department of State by calling toll-free, within Pennsylvania, 1-800-732-0999. Registration does not imply endorsement.




How to get here:

The museum is located in Franklin Delano Roosevelt Park in South Philadelphia, near the Sports Complex, easily accessible from Interstates 95 or 76.

- From Pattison Avenue, turn into FDR Park at the intersection of Pattison Avenue and 20th Streets.
- Take the first left into the museum's free spacious parking lot.

 To enter through the handicap accessible entrance on Pattison Avenue, please call the museum ahead of time.

 ASHM is also easily reached by the Broad Street Subway AT&T Station or bus #17.

Hours

Tuesday – Friday:
10am to 4pm

Weekends:
12 noon to 4pm

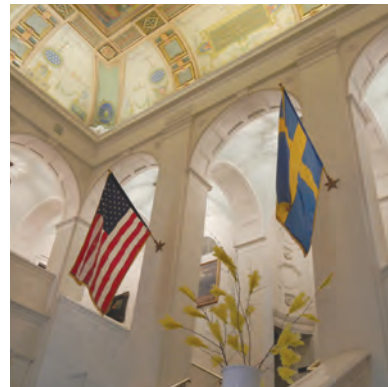
Closed on Mondays
and Holidays

Museum Admission

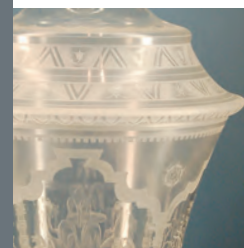
Free Members
Free Children under 5
\$4 Children 5 - 11
\$6 Seniors, Students
\$8 Adults

Admission for programs
and special events varies.

This publication was made possible
by a generous grant from the
Davenport Family Foundation.



1900 Pattison Ave.
Philadelphia, PA 19145
215.389.1776
www.americanswedish.org



Welcome
Välkommen



Sharing Swedish Culture in America

Förmedlar svensk kultur i Amerika

From the age of the Vikings, to the settlers of the New Sweden Colony (1638-1655), to contemporary issues in Swedish society and culture, the American Swedish Historical Museum will take you back in time and across the sea to learn the stories of Swedes in America.



Among the people you will meet in the museum's galleries are Jenny Lind, the 19th century Swedish international singing sensation, John Ericsson, the mastermind behind the *Monitor* during the American Civil War, and Fredrika Bremmer, an author and pioneering champion of human rights.

