

Visit the John Stevens Gallery at Historic Nolt's Mill

Two great artists situated in a newly renovated circa 1770 stone mill near all the major attractions in the center of Amish country. 3000 square ft. of art, antiques, and history presented in a gallery setting.



- See Our Work Anytime! -

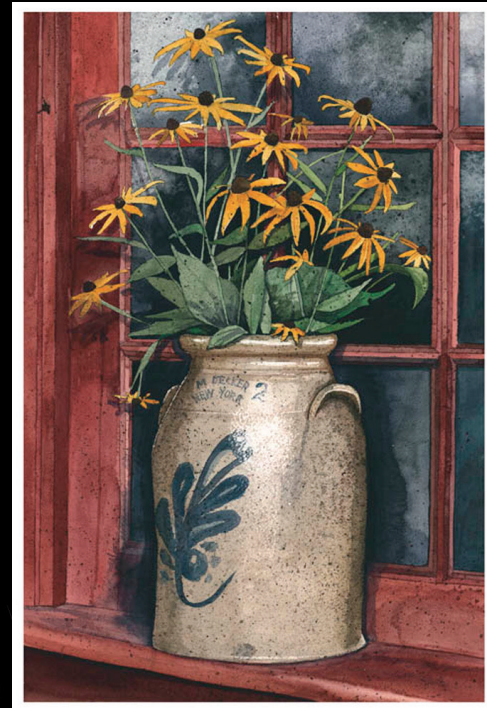
Can't make the trip... visit us online at
www.johnstevenslimited.com



John Stevens Gallery

Including Folk Art
From Sarah Gilligan
at Nolt's Mill

*One of Pennsylvania's Premier Artists
invites you to visit his
gallery in Bird-In-Hand*



"Summer Susans"

*Original Watercolors - Limited Edition Prints
Scenes from our Vanishing Past
Open Daily 10am - 5pm, closed Sundays
Open Mondays by chance*

**John Stevens Gallery at Nolt's Mill
2549 Old Philadelphia Pike • Bird-In-Hand, PA**

717-472-2287

www.johnstevenslimited.com

John Stevens

John Stevens is a renowned regional watercolorist who has been capturing the warmth and beauty of historic living in the Atlantic northeast for over 20 years.

His unconventional technique combines the traditional loose washes for which watercolor is noted with the tight detail (as seen in his realistic stone and log surfaces) that is more frequently found in oils. Inspired by history, colonial architecture and antiques, his paintings return us to our early American past and makes us long for a time and lifestyle that is rapidly vanishing.



As Stevens explained in a recent interview, "it is essential for any artist to have a thorough understanding of the subject matter he/she is painting in order to capture the essence of the subject. That's what makes any artist excel, whether he is an actor, a song writer, a novelist or a painter. I enjoy painting but it is really the subject matter that I am in love with."



Stevens work is noted for its uncommon attention to detail and his ability to pull the viewer into the painting, often leaving the viewer with a sense of deeper understanding about the subject matter. John's work hangs in many corporate and private collections across the United States.

Sarah Gilligan

Sarah Gilligan has been creating hand painted folk art for over 20 years. Our home is filled with her creations, and now she is offering her beautiful work to the public.



Her painted folk art pieces are inspired by important New England and Pennsylvania Dutch antiques that are in museums and private collections. Whether painted on actual



antiques, or newly crafted reproductions, Sarah's folk art pieces are sought out by discriminating collectors who seek accurate and faithful copies of museum quality pieces no longer available to the market.

www.SarahGilliganFolkArt.com