



THE DOLPHIN FLEET

THE WORLD'S MOST POPULAR
WHALE WATCHING BOATS

WHY THE DOLPHIN FLEET?

- **ORIGINATORS OF WHALE WATCHING ON THE EAST COAST:** We are the largest, most successful and experienced fleet in the country. Our captains have more whale watching experience combined than any other company in the region.
- **AFFORDABLE:** Dolphin Fleet strives to make whale watching affordable for the entire family and continues to offer savings on every fare.
- **CHILD SAFE GUARD RAILS:** No open rails for children. You're in the boat, not on it.
- **DESIGNED FOR WHALE WATCHING:** Dolphin Fleet vessels are built for stability and will carry you quickly to the whales. For your comfort, we have large air conditioned cabins or you may relax on our sun deck.
- **SCENIC TRIPS:** After departing from Provincetown Harbor, you will see the tip of Cape Cod, lighthouses and the beauty of the National Seashore Park beaches and dunes.
- **CLOSEST PORT TO THE SANCTUARY:** This means less traveling time and more time with the whales. Most trips are 3-4 hours long.
- **TRUE WHALE EXPERTS AND EDUCATORS:** A presentation about whales and the marine habitat is given onboard Naturalists will answer questions and guide you throughout the trip.
- **OUR GALLEY:** Attractive breakfast & luncheon menu. Cocktails and other refreshments available. Unable to accept credit cards on board.
- **SANCTUARY GUIDE:** For our foreign guest we have a beautiful full color guide to the Stellwagen Bank Sanctuary printed in over six different languages.

Dolphin Fleet Whale Watching

April thru October

TOLL-FREE RESERVATIONS

from all USA & Canada Exchanges

OFFICE HOURS 7am to 9pm

call **1-800-826-9300**

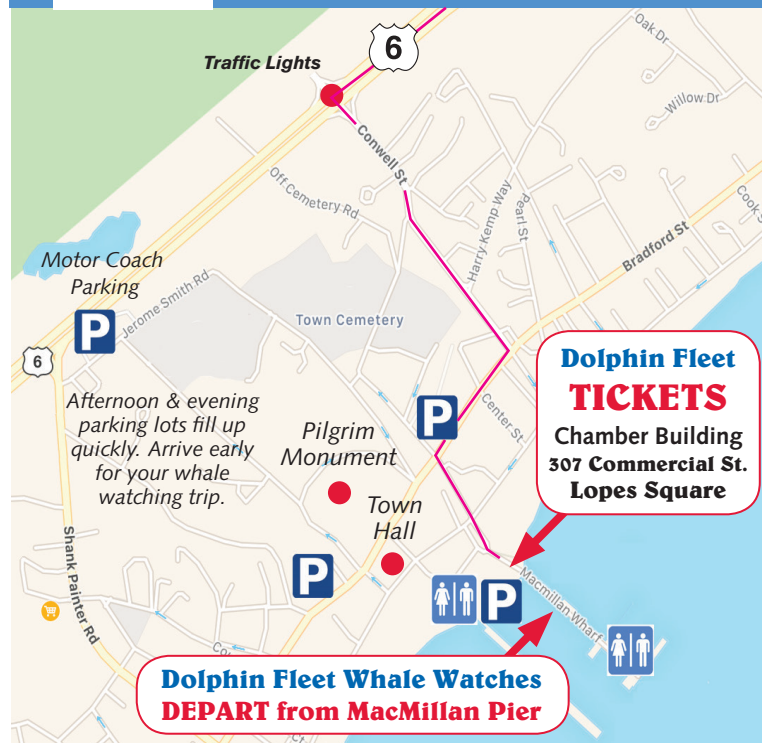
or **1-508-240-3636**

**BUY DISCOUNTED
TICKETS ONLINE AND \$AVE!
www.whalewatch.com**

FOR YOUR CONVENIENCE WE OFFER UP TO 10 TRIPS
DAILY DEPARTING FROM PROVINCETOWN HARBOR



ASK ABOUT GROUP DISCOUNTS
Children 4 and under FREE with family

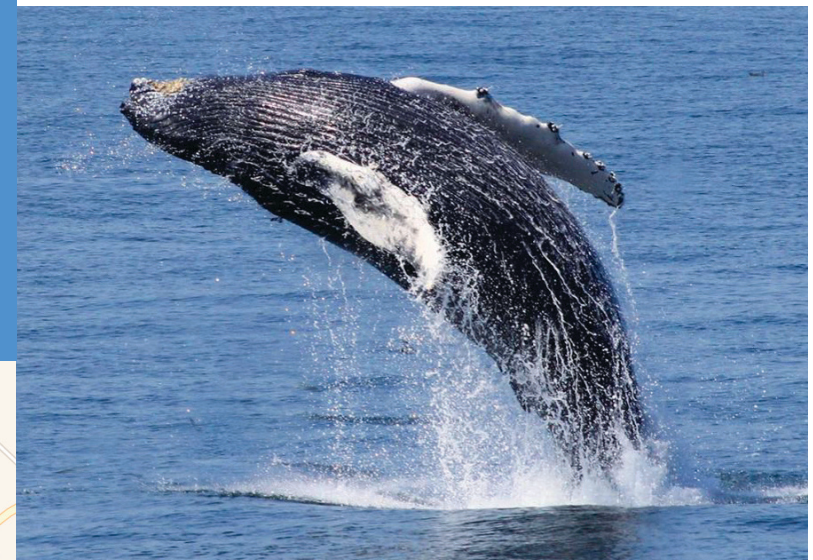


WHALE WATCH



**Dolphin Fleet
OF PROVINCETOWN**

ORIGINATORS OF THE EAST COAST WHALE WATCH



Welcome Aboard

**Cape Cod's Premier
Whale Watch**

ADVENTURE, FUN & SCIENCE

An ocean adventure like no other, this marine
sanctuary eco-tour will create memories
that will last a lifetime.

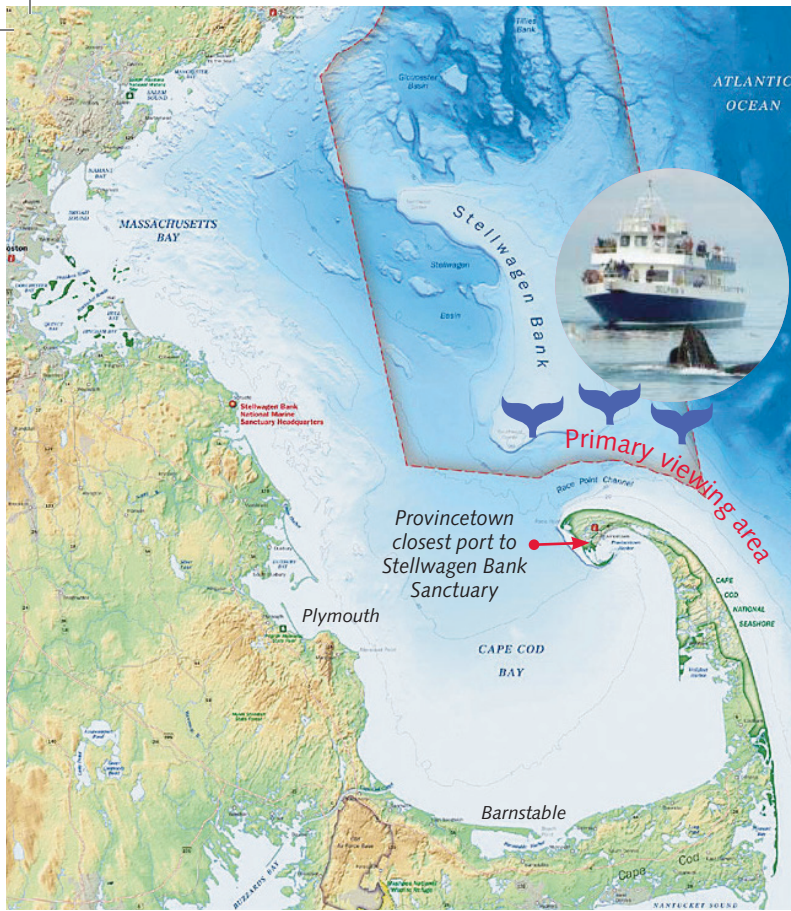
GUARANTEE

In the unlikely event of no WHALE sightings on
regular trip, all paying passengers will receive a FREE
ticket for a future trip!

Gift Certificates Available

RESERVATIONS STRONGLY ADVISED

www.whalewatch.com



Provincetown: Gateway to Stellwagen Bank National Marine Sanctuary

Provincetown is the closest port to access the Stellwagen Bank National Marine Sanctuary, a protected marine habitat with an amazing diversity of aquatic life, including whales, dolphins, sea birds and other sea creatures. *Whale sightings often occur as soon as we leave port partly due to Provincetown's location 40 miles out at sea.*



Adventure, Fun & Science

Few experiences in life combine adventure, fun & science as does a whale watch in a protected marine habitat.

As we depart Provincetown harbor you will travel along the shoreline of the Cape Cod National Seashore Park at the very tip of Cape Cod with views of spectacular beaches, lighthouses and historic landmarks.

Dolphin Fleet started whale watching in 1975, pursuing a scientific mission to preserve marine mammals, especially the great whales. *We bring a first-hand experience of these magnificent creatures to people from across the world, to view them in their natural habitat.*



Each trip is a guided by a trained, experienced naturalist who brings the wonders of the deep to life with narration explaining the behaviors of each creature we encounter, and will guide you throughout the trip. Scientific data is collected onboard each trip. The documented photos of individual whales and the behavior data is shared with many scientific and educational institutions.

Onboard you will find a science center with electronic chart plotters and bathometric chart displays so you can track the vessel movement. There is also a kiosk with information about the marine



mammals, their habitat, how Stellwagen Bank was formed and much more.

Printed field guides describing marine life in Stellwagen Bank are available in foreign



Dolphin Fleet offers up to 10 trips daily to fit into your schedule. Reserve early or book online to ensure your voyage. Whale watching is one of the most popular activities on Cape Cod!

What to bring

The trip will last three to four hours so you should bring **sunblock, sunglasses** (preferably polarized to see the whales clearly in the water) and **warm clothing** for the sea breeze.



Wear sneakers or shoes with good traction.

Don't forget a **camera** to record and share your unique experience. Binoculars will give a closer look at these rare animals.

If you forget anything don't worry, we have everything you'll need in the gift shop. Sorry, we're unable to accept credit cards on board.



Dolphin fleet captains and guides are participants in the whale sense program, a voluntary program committed to higher standards of whale watching. *They are trained specifically for working with whales in conformance with these standards for responsible whale watching.*

