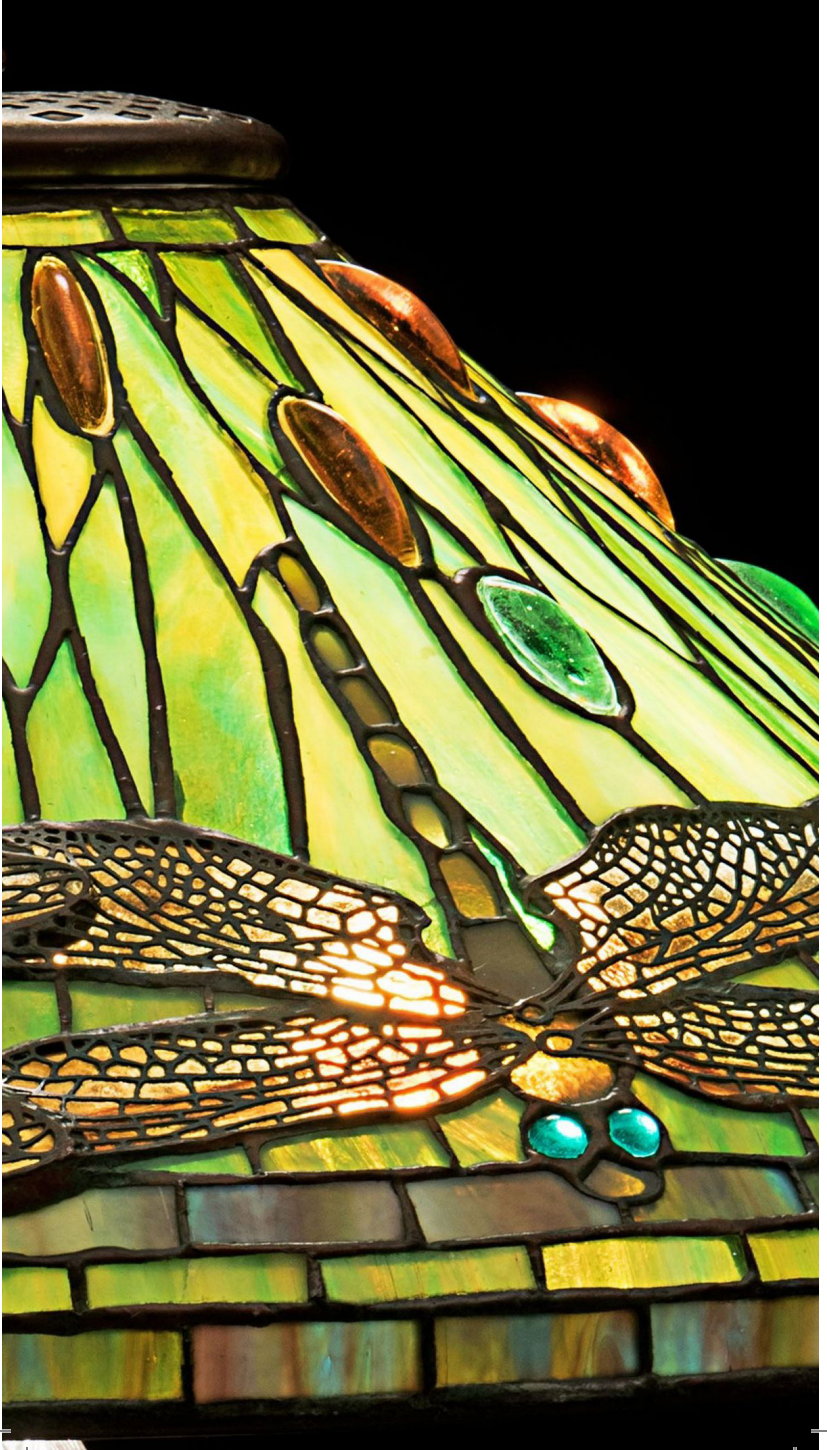
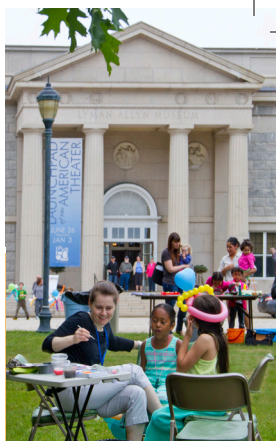


●●● | **Lyman Allyn**
ART MUSEUM

Beauty • Inspiration • Imagination





Lyman Allyn Art Museum —*New London's Own*

The Lyman Allyn Art Museum welcomes visitors from New London, southeastern Connecticut, and from all over the world. Established by a gift from Harriet Allyn in memory of her seafaring father, the museum opened the doors of its beautiful neoclassical building in 1932. Today it houses a fascinating collection of objects from ancient times to the present: artworks from Africa, Asia, the Americas, and Europe, with particularly strong collections of American paintings, decorative arts, and Victorian toys and doll houses. Outside, a sculpture trail is surrounded by 12 rolling acres of gardens and lawns.

The Lyman Allyn recently installed *Louis Comfort Tiffany in New London*, a permanent exhibition exploring the rich and varied work of artist, craftsman, and designer, Louis Comfort Tiffany. This exhibition examines the artist's career, his many ties to southeastern Connecticut, and his enduring legacy in the region. Featured are three stained-glass windows, lamps, favrile glass vessels, silver, jewelry, paintings, archival photographs, and other objects, some of which come from Tiffany descendants.

Throughout the year, the Lyman Allyn offers special programming including exhibition openings, lectures, educational opportunities, and musical events for families and the general public. Guided tours, self-guided exploration, and tours customized for a group's needs or goals are all available. The Museum and grounds are also available for personal and corporate event rentals.

Hours

Tuesday through Saturday: 10 a.m. - 5 p.m.

Sunday: 1 - 5 p.m.

Closed Monday and major holidays.

Admission

Adults \$12, seniors \$9, students \$5; youth 12 and under, New London residents, and museum members admitted FREE.

Directions

From I-95 North or South, take exit 83 and follow the cultural attraction signs.

625 Williams Street
New London, CT 06320
860.443.2545 • www.lymanallyn.org

Connecticut



Artwork from the Museum collection (front): *Dragonfly Lamp*, Tiffany Studios, designed by Clara Driscoll, leaded glass, ca. 1906; (back clockwise from left): Kazuya Sakai, *Arcana*, acrylic on canvas, 1976; Charles H. Davis, *Sky*, oil on canvas, 1924; Annual Summer Fest at Lyman Allyn.