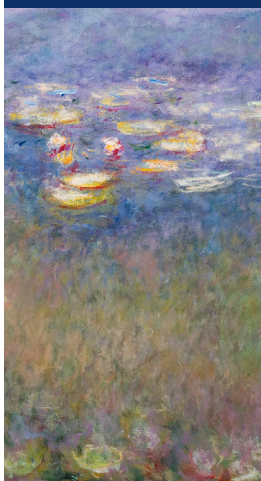


SAINT LOUIS ART MUSEUM



visit slam.org



Welcome

The Saint Louis Art Museum is one of the nation's leading comprehensive art museums, containing more than 33,000 works of art. Our collections include works of exceptional quality from virtually every culture and period.

HOURS

Tuesday–Sunday, 10 am–5 pm
Friday, open until 9 pm
Closed Monday

ADMISSION

Admission to the Museum is always free. Admission to main exhibitions is free on Friday.

TOURS

Free public tours are available at 10:30 am on Tuesday–Friday, and at 1:30 pm on Saturday and Sunday. Meet at the Information Center in the Museum's Main Building.

MUSEUM SHOPS

The Museum Shops are located on Level 1 in the South Building, and on Level 2 in the East Building; both shops offer an eclectic assortment of unique, art-inspired gifts.

DINING

Panorama Restaurant (on Level 2 in the East Building) and the Museum Cafe (on Level 1 in the Main Building) offer a savory selection of locally sourced menu items. Reservations are recommended for Panorama and can be booked online at slam.org, or by calling 314.655.5490.

ACCESSIBILITY

All areas of the Museum are accessible. Complimentary wheelchairs are available at both Information Centers.

LOCATION

The Saint Louis Art Museum is situated in Forest Park, one of the largest urban parks in the country, just west of downtown St. Louis, and is easily accessible from Interstates 44 and 64/40, via Hampton Avenue.

PARKING

Visitor parking is to the north of the Museum, or in the paid underground garage to the east off Fine Arts Drive.

One Fine Arts Drive, Forest Park
St. Louis, Missouri 63110-1380
314.721.0072 slam.org
© 2018 Saint Louis Art Museum

Connect with us



SAINT LOUIS ART MUSEUM